

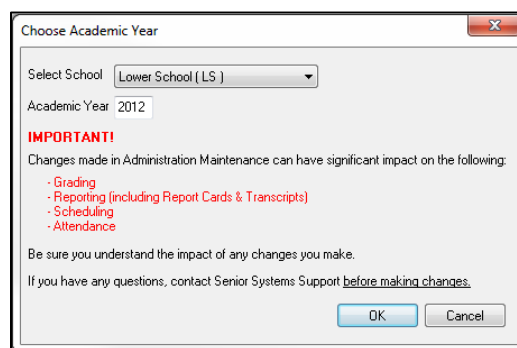
## New Registrar Administration Maintenance Messages

The Administration Maintenance area of Registrar enables you to configure all aspects of your school's academic settings, including calendars, schedules, grading scales, transcript and report card settings, and My BackPack settings. In most cases, Administration Maintenance settings are established at the beginning of a new academic year. Then, very few changes are made until the next year.

In some cases, making changes to Registrar Administration Maintenance is necessary. When making these changes, it is important to understand the impact that even minor changes can have. In order to clarify and emphasize the impact of these changes, certain warning messages have been implemented. These messages are designed to ensure that users understand the impact of changes, and to prevent inadvertent changes that may have unintended impact on areas throughout the system.

### Registrar Administration Maintenance

The School and Academic Year selection screen is the first place you will notice new messages. The functionality of this screen has not changed.



When you modify settings on select tabs, the system will notify you of the potential impact of your changes. The impacted areas are based on the tabs and/or fields you edit. If you do not want to continue and save your changes, click 'Cancel'. To save changes, check the box to confirm, then click 'Save'.

