

All Applications Release Bulletin

August 2009

In this bulletin...

- Start Online Support Session (Help Menu) 2
- Nested Parentheses in Queries 3
- Expanded Field Length for Industry (Code Maintenance) 6
- Saved Window Size/Position 6

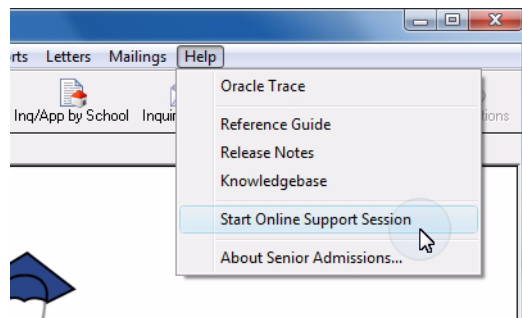
About Release 91_4

The latest release includes several enhancements that apply across many or all of the Senior Systems applications, including an easier, streamlined way to start an online support session, extended query editing capabilities to enable the use of nested parentheses, an expanded field length for the Industry field (maintained in Code Maintenance, and used in Alumni Development and Student/Parent address information), and saving the current window size and position when closing and re-opening all Senior Systems applications.

As always, if you have any questions about these new and enhanced features, be sure to contact Senior Systems Product Support for assistance!

Start Online Support Session (Help Menu)

The process for preparing to share your system and data over the internet with Senior Systems support personnel has been streamlined by the addition of an option to the Help menu in all Senior Systems applications: Start Online Support Session. Selecting this option opens a separate browser window or tab for you and automatically navigates to the correct web address, so you will no longer need to have Senior Systems support personnel provide the web address via email or over the telephone. This makes the process quicker and less prone to errors when keying in the web address. Note that this menu option is only used under the direction of Senior Systems personnel.



While this menu option prepares your system for the session, it does not actually allow Senior Systems personnel to access your system and data. You will still need to type in the Support Session Number (given to you by Senior Systems Product Support) to begin the sharing process.

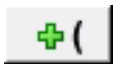

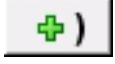
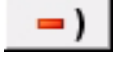


A screenshot of a web browser window titled "Pre-Session Form - Windows Internet Explorer". The address bar shows the URL "http://senior-systems.webex.com/senior-systems/sc30/cu". The page content includes a "Pre-Session Form" section with the text: "In order to provide a higher quality of service, we ask that you fill in the following information:". Below this, there is a "Support Session Number:" label, a text input field, and a "(Required)" note. A "Submit" button is located to the right of the input field. At the bottom of the page, there is a "powered by webex" logo, a copyright notice "Copyright © 2009 Senior Systems, Inc. All rights reserved.", and links for "Privacy", "Terms of Service", and "Request information about WebEx services". The browser status bar at the bottom shows "Done", "Internet | Protected Mode: Off", and "100%".

Nested Parentheses in Queries

Just as in mathematical calculations, the proper placement of parentheses in queries can make a significant difference in the results returned, particularly for queries that utilize both 'AND' and 'OR' operators. Although previous versions of the Query Edit function allowed you to place open- and close-parentheses within your queries to more precisely control the output, there are times when it is helpful to use nested parentheses to get the results you want. The Query Edit function now includes the ability to both add and remove multiple nested sets of open- and close-parentheses within your queries, while still verifying that each open-parenthesis is matched with a close-parenthesis somewhere within the query.

Note: Complex query development is generally an advanced function. If you are unsure of how to proceed, be sure to check your results carefully, or contact Senior Systems Product Support for assistance!

Even if you don't build complex queries that require multiple sets of nested parentheses, you will notice that the buttons on the Query Edit screen have changed slightly, so to enter (or remove) even single sets of parentheses, or to change the order of the command lines, you will need to click the appropriate button:

Button	Function
	Adds an open-parenthesis to the selected command line
	Removes an open-parenthesis from the selected command line
	Adds a close-parenthesis to the selected command line
	Removes a close-parenthesis from the selected command line
	Moves a command line up above the previous one
	Moves a command line down below the following one

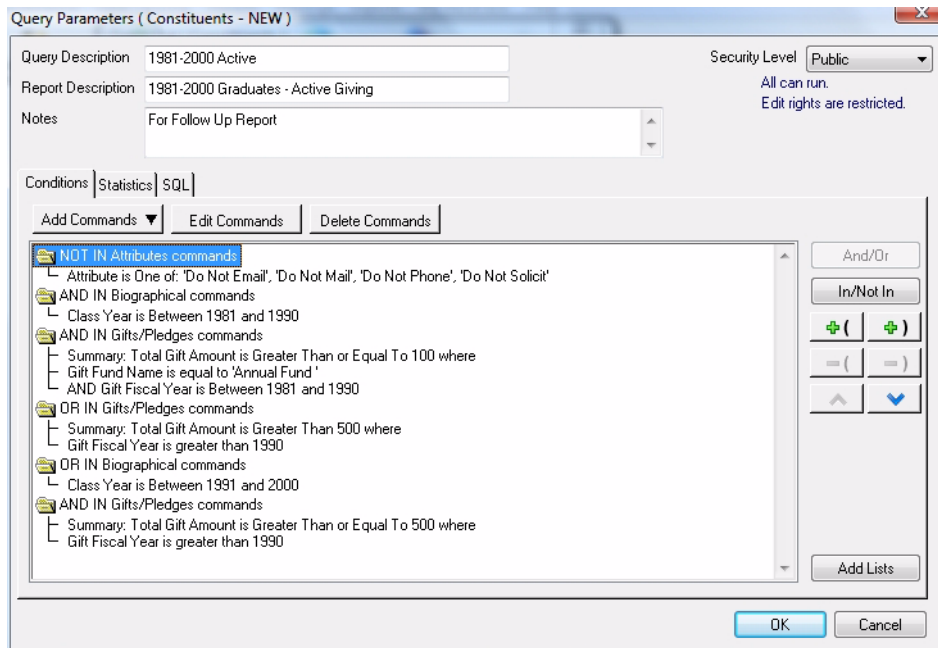
The following example illustrates a situation from the Alumni Development application where multiple nested parentheses help to ensure the correct output.

Complex Query Example

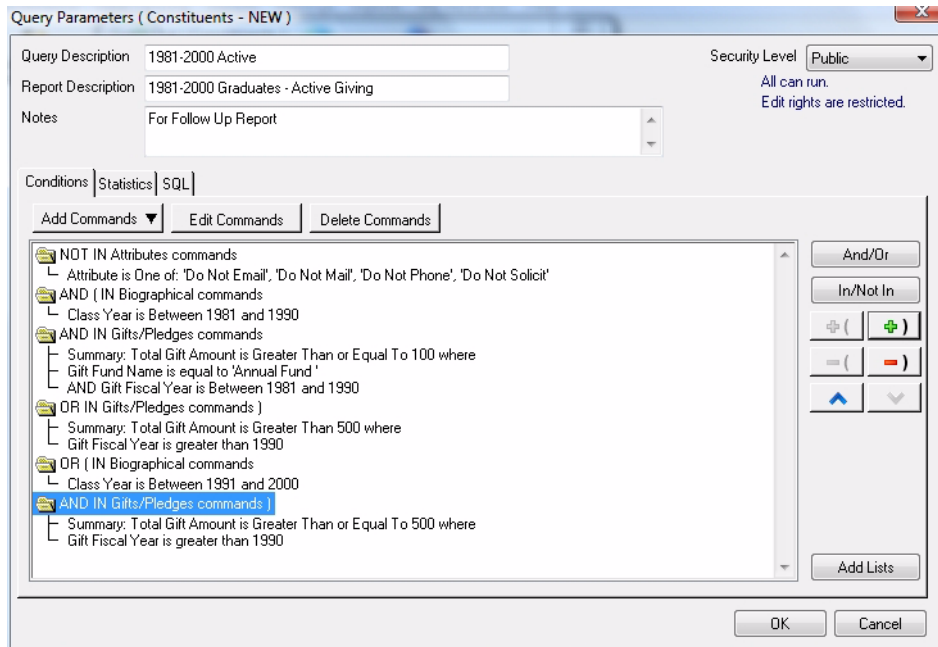
Your objective is to build a query to return only alumni who are solicitable (i.e. who do NOT have an attribute of Do Not Email, Do Not Mail, Do Not Phone, or Do Not Solicit) AND who satisfy one of the following conditions:

1. Graduated between 1981 and 1990 and have given at least \$100 to the Annual Fund in that time period or who have given more than \$500 since 1990.
2. Graduated between 1991 and 2000 and have given more than \$500 since 1990.

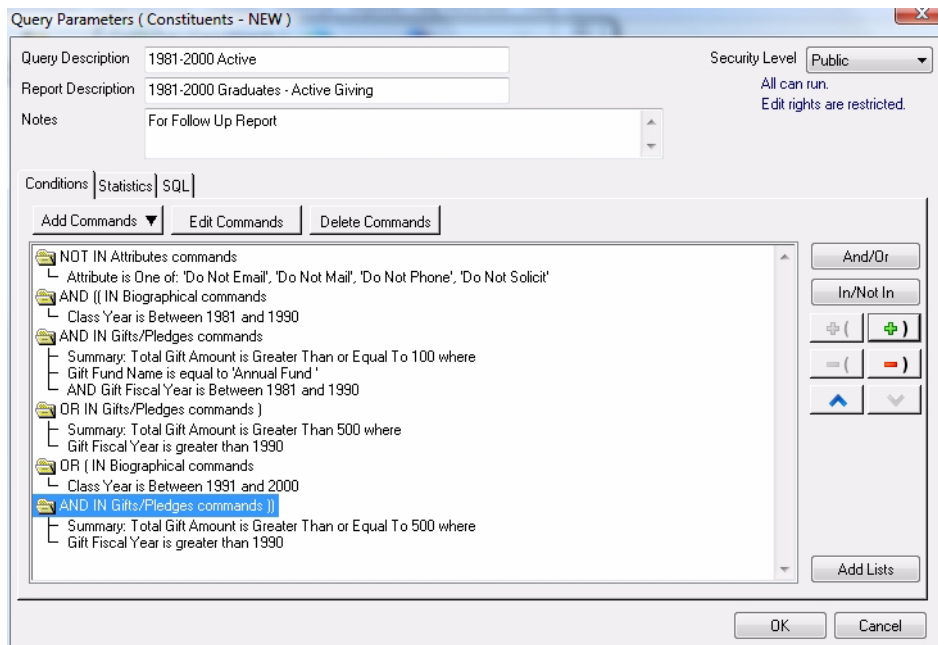
The first step is to construct a new query and specify each of the conditions:



The second step is to enter a set of parentheses around the commands for all the parts of condition #1, and another set of parentheses around all the parts of condition #2. To do this, just select each relevant command line and click the appropriate "Add" button to insert the open- or close-parenthesis:



The third step is to enter parentheses around the entire set of conditions #1 and #2, so that any alumni who meet either of those conditions AND are solicitable will be returned by the query (this requires multiple parentheses on some command lines). To do this, just select each relevant command line and click the appropriate "Add" button to insert the additional open- or close-parenthesis:



Expanded Field Length for Industry (Code Maintenance)

The values for the Industry field are defined for your school via Code Maintenance in the System Administration application. This field is entered and displayed with company information in the Alumni Development application, and also can be associated with parent work information in the Student Parent application. It also appears on several reports related to company information. Previously, this field length was set to 20 characters, but it has been expanded to 60 characters to better accommodate more descriptive industry codes.

Saved Window Size/Position (All Applications)

Now when you exit from a Senior Systems application, your current window size and position is saved, and becomes the starting window size and position the next time you open that application. As always, it will still be possible to manually adjust the window size and position as you use each application, and when you exit, the new size and position will be saved.