



# Senior Admissions Products Release Bulletin

It is our pleasure to introduce you to the latest enhancements to ADMISSIONS products.

## Inside

Admissions Statistics  
Enhanced to Filter for  
Current Decisions p. 2

Column for Midyear  
Students Added to  
Enrollment Statistical  
Report p. 2

## Admissions Statistics Enhanced to Filter for Current Decisions

If your school is using the new query system, you will see a new **Current Decision** checkbox in the Statistics screens in **ADMISSIONS**. This option enables you to filter statistics to show only records with current decisions.

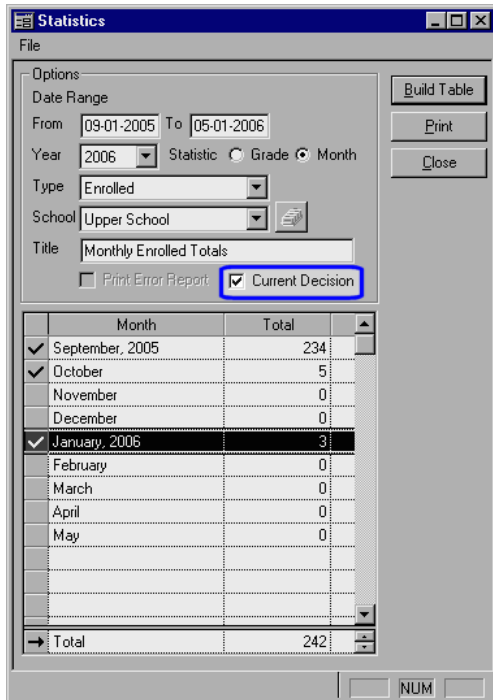
## Column for Midyear Students Added to Enrollment Statistical Report

We have also added an optional Midyear Students column to the Enrollment Statistical Report. This option too is only available if your school is using the new query system.

# Admissions

## Statistics Enhanced to Filter for Current Decisions

If your school is using the new query system, you will see a new Current Decision checkbox, shown below, in all of the Statistics screens.



Selecting this option enables you to filter your statistics to show only those records with current decisions. If there is no checkmark in the checkbox, then all records of the type selected and in the date range specified would show in the report, including those that have since changed.

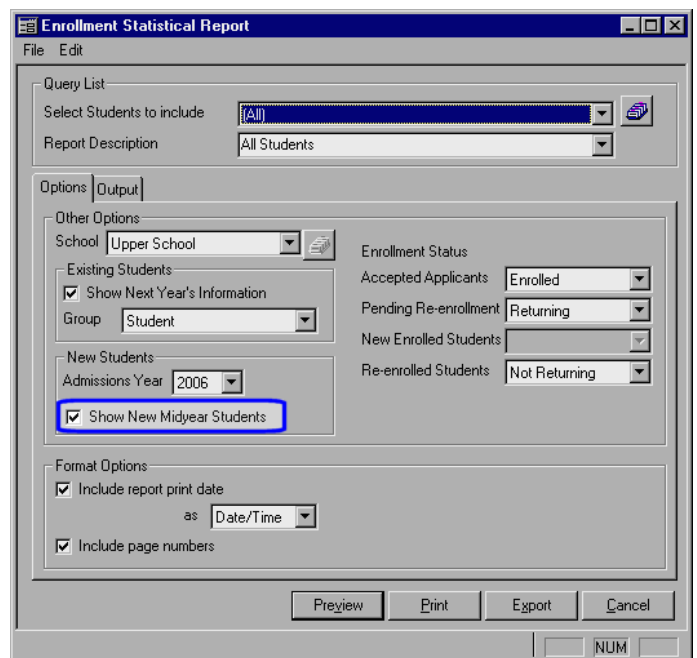
For example, if you had a number of students who enrolled during the time period specified but who later

withdrew, the withdrawn students would be included in your statistics if you did not select to filter for current decisions. Selecting the Current Decision checkbox, however, would create a filter so that only students who are currently enrolled would be included.

# Enrollment Management

## Column for Midyear Students Added to Enrollment Statistical Report

If your school is using the new query system, you can include an optional Midyear Students column in the Enrollment Statistical Report by placing a checkmark in the new Show New Midyear Students checkbox in the New Students area in the Options tab, as shown below.



If there is no checkmark in this checkbox, the Midyear Students column will not shown on the report.