



Ascendance Release Bulletin

May 26, 2017

In this bulletin...

Contents

Accounts Receivable	2
Tracking added to Student Maintenance.....	2
Auto Pay and Tuition Management are available!	2
New MasterCard 2 series is supported by MBP.....	3
Registrar.....	3
Tracking added to Student Maintenance.....	3

About Release 93_4 for Ascendance

Contact Support@senior-systems.com if you have any questions about any of these new features.

Accounts Receivable

Tracking added to Student Maintenance

Use the *Track* Tab to record any contact, conversations, events, or follow-up action regarding your students. Attach a media file to store important information related to each entry and use the Notify option to remind yourself or another user of important events.

The screenshot displays the 'Student Maintenance - (John Student)' window with the 'Track' tab selected. A 'Track Maintenance' dialog box is open, allowing users to enter activity details. The dialog includes fields for Date (05-22-2017), Type, Person (STAFF MEMBER), and a 'Notify' checkbox. It also features a 'Follow-up Action' section with Date, Type, and Description fields, and a 'Media' section with a file selection button. Search Topics are also available at the bottom. The background window shows a table with columns for Activity Date, Activity Type, Person, Activity Comments, Follow-up Date, and Follow-up Type.

In order to use this feature, you will need to be assigned security rights to **Accounts Receivable -> Maintenance -> Students -> Tracking**.

Auto Pay and Tuition Management are available!

Auto Pay and Tuition Management are now available with the latest 93_4 Ascendance version. To avoid confusion with both your staff and parents, it will be installed in the "off" position. All you have to do is call 1-888-480-0102 to speak with your Account Executive for assistance in activating it. We will send you complete instructions on how the product works, including an email you can send to parents on how to use it and the cost.

New MasterCard 2 series is supported by MBP

MasterCard introduced a new series of bank identification numbers (BIN) that begin with a "2". The new "2" series bin will be processed the same way as MasterCard's existing bin range between "51-55." In support of the new "2" series bin, MasterCard will begin issuing cards utilizing the 222100-272099 bin range.

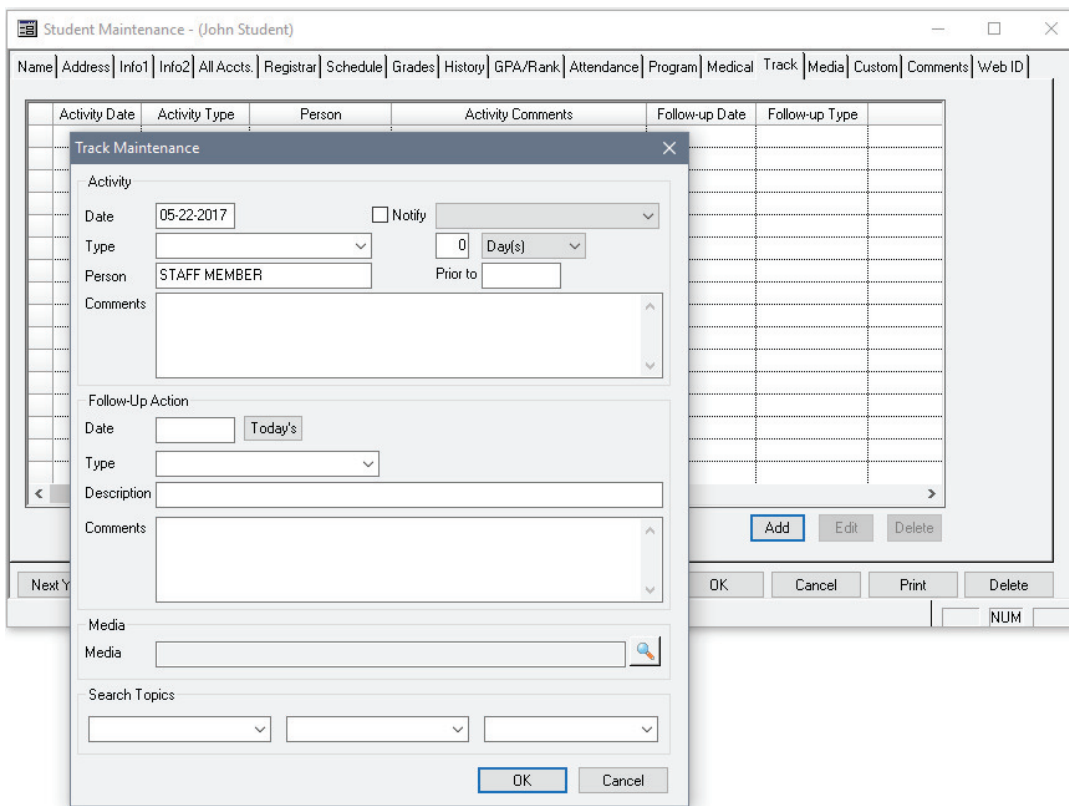
Effective May 1, 2017, merchants will be required to support the updated bin tables in order to accept the new "2" series bin cards. If you are not sure if your physical terminal can support this new "2" series bin, please contact your merchant account provider or for Diamond Mind customers you can contact their customer service team immediately for assistance. Ascendance applications and MBP have been changed to accommodate the new "2" series BIN.

In order to avoid rejected transactions and potential fines from your merchant provider you must install the 93_4 update.

Registrar

Tracking added to Student Maintenance

Use the *Track* Tab to record any contact, conversations, events, or follow-up action regarding your students. Attach a media file to store important information related to each entry and use the Notify option to remind yourself or another user of important events.



In order to use this feature, you will need to be assigned security rights to **Registrar -> Maintenance -> Students -> Tracking**.



My BackPack Release Bulletin

May 26, 2017

In this bulletin...

Contents

Admin Community	2
MBP Server upgrade	2
New MasterCard 2 series is supported by MBP	2
Form Builder	2
Faculty Community	2
Student Activities.....	2
Student/Parent Community	3
Auto Pay and Tuition Management are available!	3

About Release 93_4 for My BackPack

Contact Support@senior-systems.com if you have any questions about any of these new features.

Admin Community

MBP Server upgrade

Existing MBP servers must upgrade to .NET runtime version 4.5 or later before 934 is installed.

New MasterCard 2 series is supported by MBP

MasterCard introduced a new series of bank identification numbers (BIN) that begin with a "2". The new "2" series bin will be processed the same way as MasterCard's existing bin range between "51-55." In support of the new "2" series bin, MasterCard will begin issuing cards utilizing the 222100-272099 bin range.

Effective May 1, 2017, merchants will be required to support the updated bin tables in order to accept the new "2" series bin cards. If you are not sure if your physical terminal can support this new "2" series bin, please contact your merchant account provider or for Diamond Mind customers you can contact their customer service team immediately for assistance. Ascendance applications and MBP have been changed to accommodate the new "2" series BIN.

In order to avoid rejected transactions and potential fines from your merchant provider you must install the 93_4 update.

Form Builder

Issue Fixed: Purchasable items were mistakenly deleted from the form when a copy was made of the form.

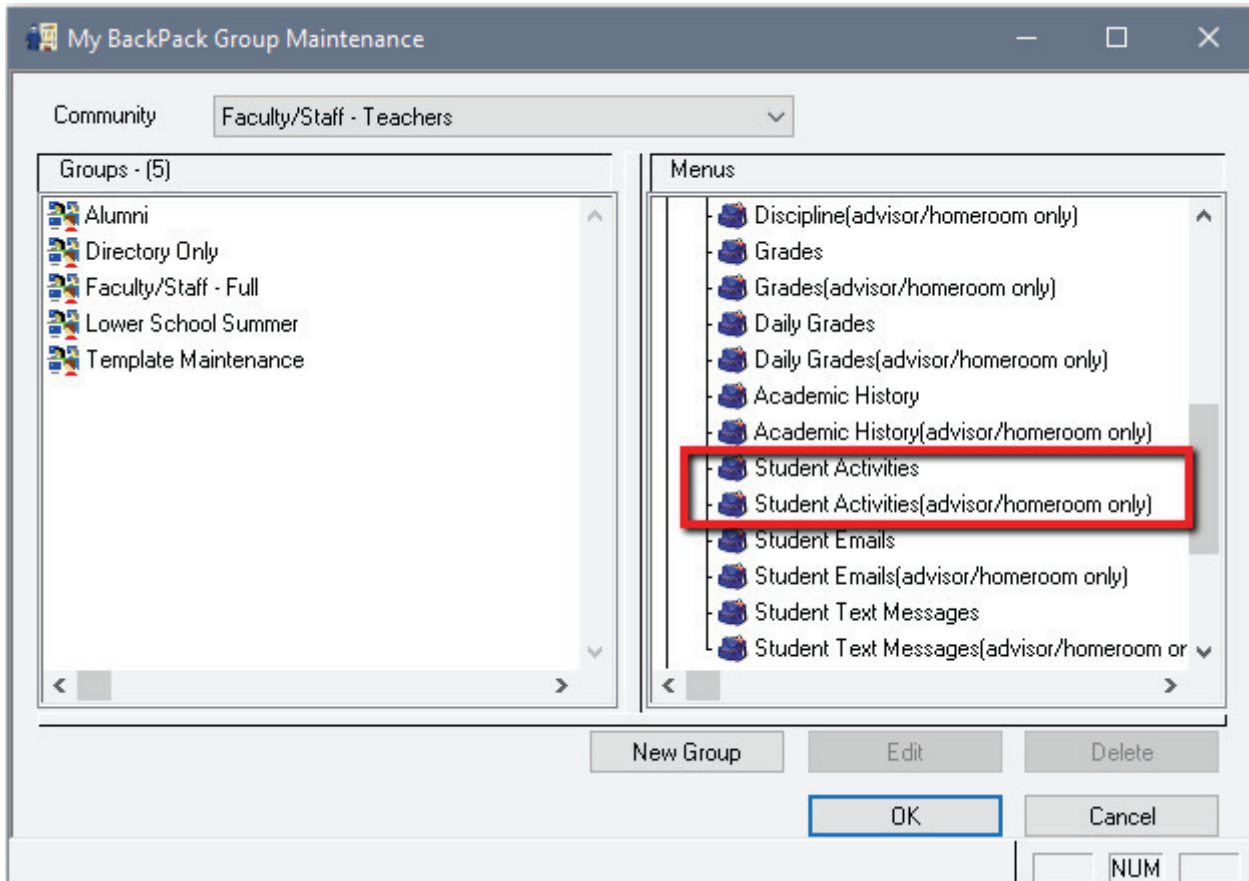
Faculty Community

Student Activities

Student **Activities** have been added to the Student Directory Details. This feature enables your faculty and staff to view and add this important information in My BackPack, anywhere and anytime.

Student	Family	Schedule	Attendance	Discipline	Grades	Daily Assignments and Comments	Academic History	Activities	Documents
Year: ALL		Group: ALL		Type: ALL		Add Activity			
Year	Group	Type	Description	Duration	on transcript				
2016	Community Service	Q2 Community Svc.	Cycle	3.0	Y				
2016	Community Service	Q2 Community Svc.	5th Grade Service Day	2.0	Y				
				Total Duration	5.0				

To enable the **Activities** tab, there are new security keys under *Faculty > My Students > Student Directory Details*. See the screen shot below.



Student/Parent Community

Auto Pay and Tuition Management are available!

Auto Pay and Tuition Management are now available with the latest 93_4 Ascendance version. To avoid confusion with both your staff and parents, it will be installed in the "off" position. All you have to do is call 1-888-480-0102 to speak with your Account Executive for assistance in activating it. We will send you complete instructions on how the product works, including an email you can send to parents on how to use it and the cost.