

# Crystal Reports® Integration

With **Crystal Reports Integration**, schools can launch Crystal Reports they have created, directly from the *Senior Systems* application Report menus.

If you have a large inventory of Crystal Reports, they can be organized into Public

and Private Directories for the user to access and a user does not need to have Crystal Reports installed on their workstation in order to *run* the report.

With the **Crystal Reports Integration** *Senior Systems* is also able to let you use the *Senior Systems* Query System to easily generate a Crystal Report that sets up parameters for you and automatically links the appropriate tables together. This is called the Template Generator and if you wish to use it, you *must* have Crystal Reports installed.

Setting Up	p. 1 - 2
Link Existing Reports to Query	p. 1 - 8
Create New Reports with Query	p. 1-12
Hosted Databases	p. 1-17
Appendix	p. 1-18

### SETTING UP

After the *Senior Systems 90\_8* release is installed and your database is updated, any user who wishes to launch Crystal Reports from within the *Senior Systems* applications will need to have workstation setup run on their workstation.

The only users who do not need to run workstation setup are those who already have Crystal Reports version 11 installed on their workstation.

Procedure	Remarks
1. At each workstation, locate the SENIOR directory on your server.	
2. From the root of the SENIOR directory, locate the file WSETUP.EXE and execute it.	<i>You must have Administrator rights to execute this file</i>
3. When WSETUP.EXE has finished, reboot the workstation.	
4. Repeat steps 1-3 on all <i>Senior Systems</i> workstations.	

### System Administration – Assigning User Access

Here you will assign the users access to the Custom Reports options within their designated applications. Log into **SYSTEM ADMINISTRATION** as the administrator and open **User Maintenance ▶ Edit User Profiles** or **Group Maintenance ▶ Edit Group Profiles** from the **FILE** menu. Under the Application list, locate **SYSTEM ADMINISTRATION** and expand the tree. Expand Reports and then Custom Reports. You will see 4 new security access keys –

Access Public Custom Reports

Private Custom Reports Setting

Public Custom Reports Settings

Custom Reports Query Info

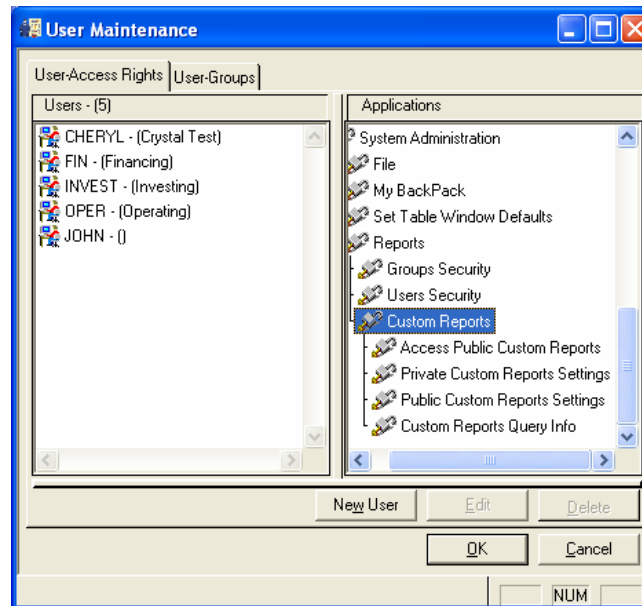


Figure 1-1. System Administration Custom Reports Security Keys

- **Access Public Custom Reports** – Assign this to all users who should be allowed to run Crystal Reports that have been placed in a ‘public’ location. The ‘public’ locations are by application so, for example, **ADMISSIONS** users will have an **ADMISSIONS** ‘public’ location that is separate from the ‘public’ location for the **REGISTRAR** Crystal Reports
- **Private Custom Reports Setting** - Assign this to all users who should be allowed to define a ‘private’ location for Crystal Reports that they either create for themselves or have been created for them and are ‘private’ in the sense that only *they* should be able to run the report. A user can have a separate ‘private’ location per application so, for example, if the user has access to the **ACCOUNTS PAYABLE** and the **GENERAL LEDGER** applications, they can have a ‘private’ location for each application in which to store reports applicable to **AP** and **GL**.
- **Public Custom Reports Setting** - Assign this to only a few users such as the *Senior Systems*, System Administrator or a Department Head. This setting allows the user to control the location of where the public reports are stored. Keep in mind that if you assign this security key to the Business Manager, for example, then they will only be able to determine the public location for the applications they normally have access to; **AP**, **GL**, **AR** etc. If the Business Manager does not have security rights to the **REGISTRAR**, **DEVELOPMENT** or **ADMISSIONS** applications, for example, then they will not be able to overwrite the report location for these departments.

- **Custom Reports Query Info** - This option lets the user create their own Crystal Reports and in doing so, they can use the *Senior Systems Query System* to select the tables, and create the appropriate parameters and table links via a template. Remember, the user must also have Crystal Reports installed on their workstation in order for this feature to work.

Highlight the security keys in the Application list, click, drag and drop onto the users you wish to assign to.

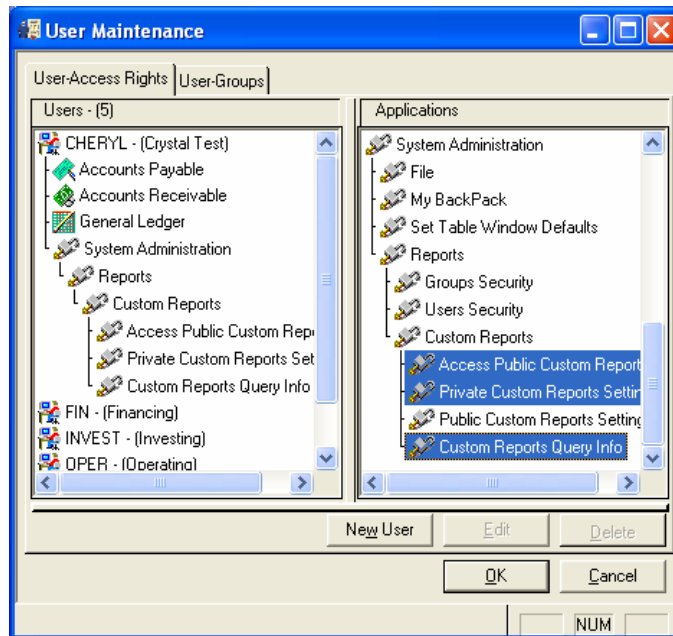


Figure 1-2. System Administration Custom Reports Security Keys

Click the **OK** button to save your changes.

While still logged into **SYSTEM ADMINISTRATION**, go to the **FILE** menu and select the option Custom Reports Setup.

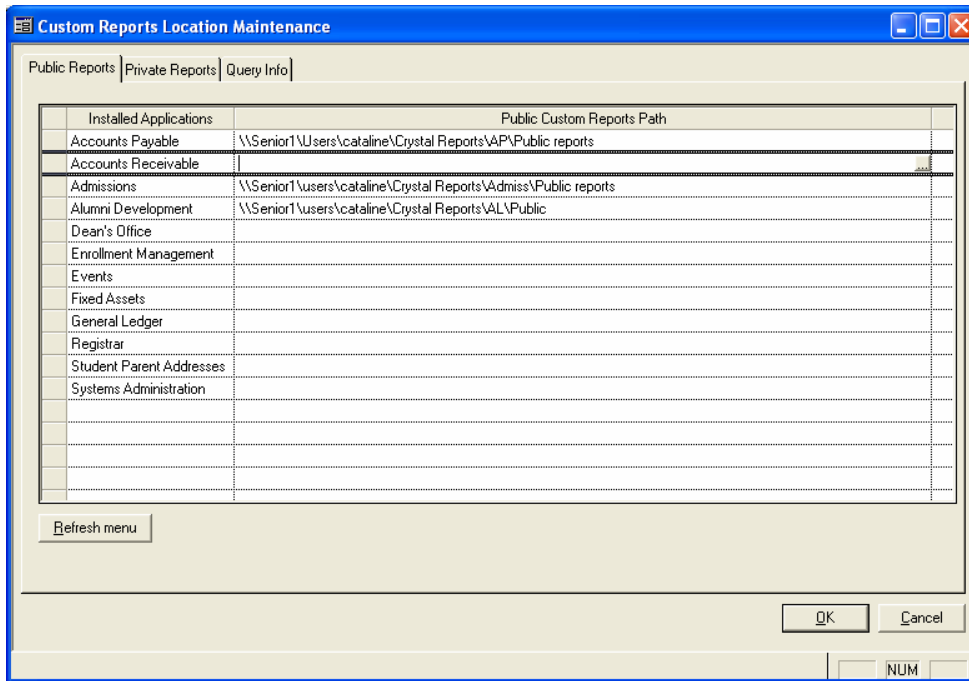


Figure 1-3. System Administration Custom Reports Setup

As the System Administrator you can fill in the location in which to store the public Crystal Reports for each application. From the Public Reports Tab, when you select an installed application that does not currently have a 'path' filled in, a search button appears on the right that allows you to search and locate a valid directory. Since this is the path for shared folders it is recommended that you use a UNC path format as displayed in figure 1-3.

Insert all the Public Custom Report Paths you need and then click the **Refresh Menu** button to add the Public Custom Reports menu to each application. Any Crystal Reports file (\*.rpt), currently located in that directory will now appear as a report, under the Public Custom Reports sub-menu.

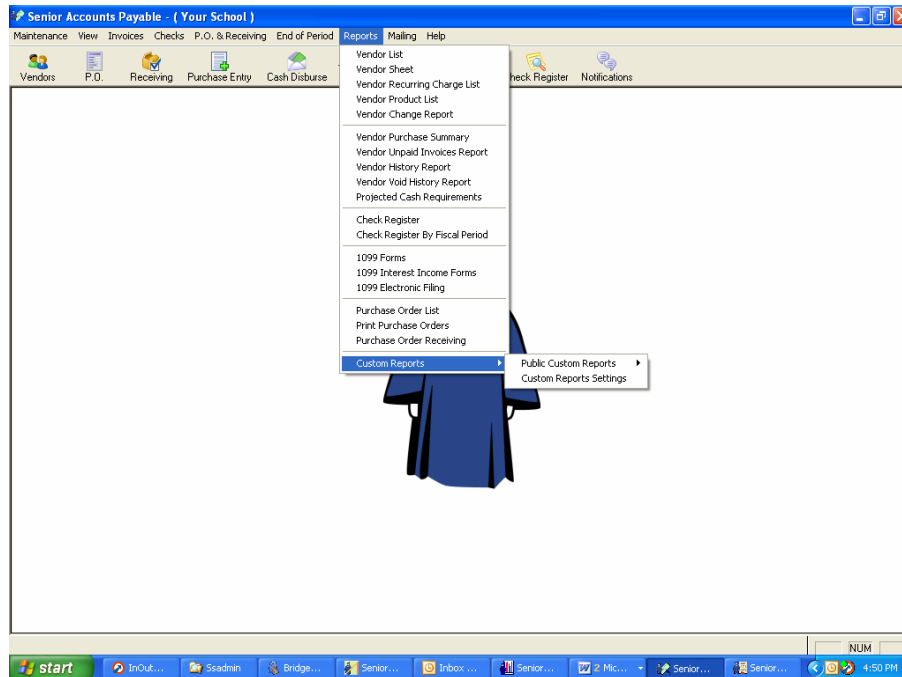


Figure 1-4. Admissions > Reports > Custom Reports > Public Custom Reports

**NOTE:** THE MENU ITEM WILL ONLY APPEAR FOR THE USERS IF THE DIRECTORY CONTAINS Crystal Reports FILES. IF THE DIRECTORY IS CURRENTLY EMPTY, NOTHING WILL APPEAR FOR THE USERS TO SELECT.

## Private Custom Reports

Now that security has been assigned you can have the user log into any application they normally have access to. In our example we will use **ACCOUNTS PAYABLE**. Once logged in the user can go to **Reports ▶ Custom Reports** and they will see the following:



*Figure 1-5. Public Custom Reports Menu*

You do not see a menu option for Private Custom Reports because that location has not yet been defined for this user. The user must now select Custom Report Settings.

Within Custom Report Settings, highlight the row for **ACCOUNTS PAYABLE** and click the Search button on the right. Select the location for the storage of this users private **ACCOUNTS PAYABLE** Reports.

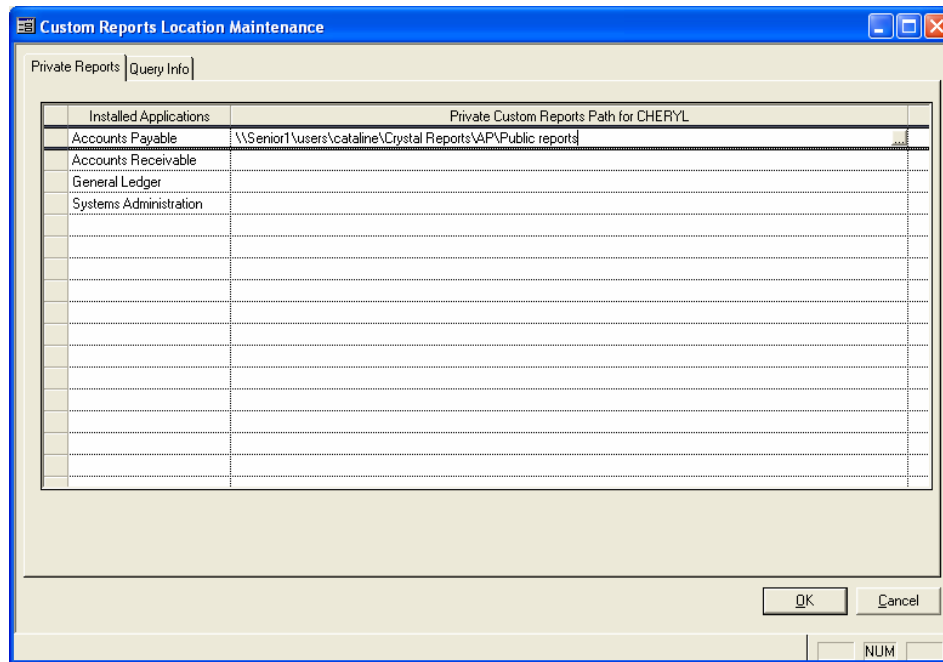


Figure 1-6. Private Custom Reports Setup

Click **OK** to save.

**NOTE:** THIS USER ALSO HAS ACCESS TO THE **ACCOUNTS RECEIVABLE**, **GENERAL LEDGER** AND **SYSTEMS ADMINISTRATION** APPLICATIONS. EVEN THOUGH WE ARE LOGGED INTO **ACCOUNTS PAYABLE**, THE USER CAN STILL ASSIGN THE PRIVATE LOCATIONS FOR THE OTHER INSTALLED APPLICATIONS, FROM HERE. THEY DO NOT NEED TO LOG OUT AND INTO THE OTHER APPLICATIONS.

Now that a Private location for **ACCOUNTS PAYABLE** Reports has been established, the Private Custom Report menu option appears and displays the Crystal Reports stored in that directory.

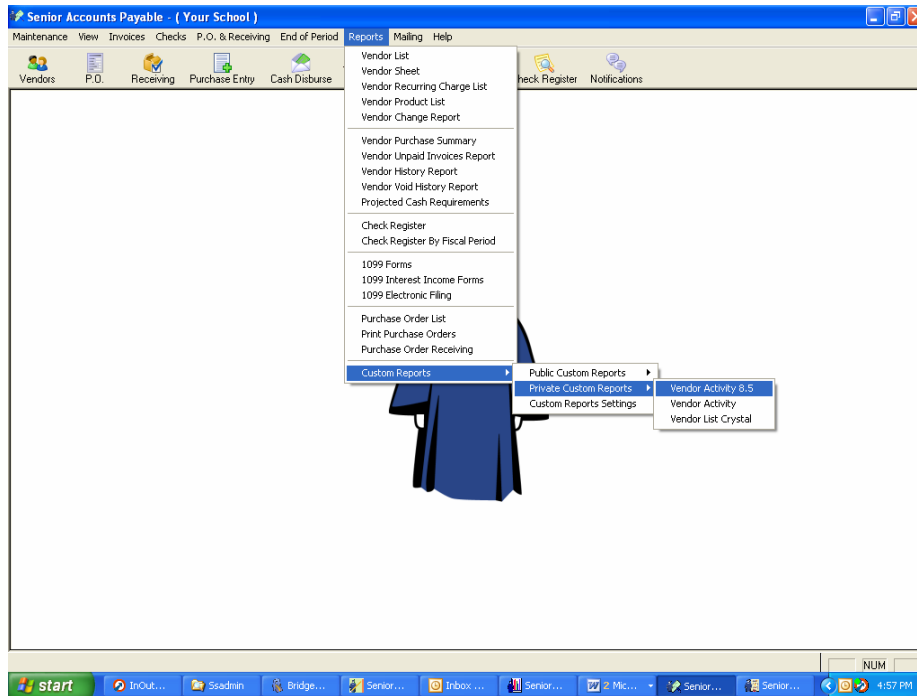


Figure 1-7. Private Custom Reports Menu

**NOTE:** THE PRIVATE MENU ITEM WILL ONLY APPEAR FOR THE USERS IF THE DIRECTORY CONTAINS Crystal Reports FILES. IF THE DIRECTORY IS CURRENTLY EMPTY, NOTHING WILL APPEAR FOR THE USERS TO SELECT.

## LINK EXISTING CRYSTAL REPORTS TO A QUERY

### Custom Reports Settings – Query Info

If the user has been assigned the Custom Reports Query Info security key AND they have Crystal Reports installed on their workstation, then they are able to create or edit their own Crystal Reports and use the *Senior Systems* Query system. If a report is linked to the Query system, when the user goes to execute it, they will be presented with a query selection window such as this one from an **ACCOUNTS PAYABLE** report:

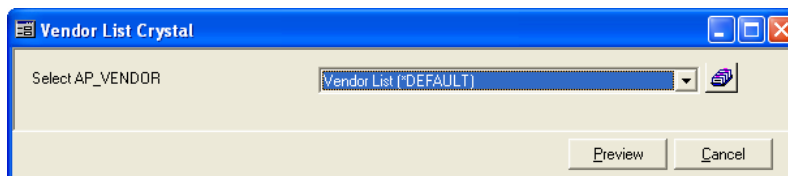


Figure 1-8. Custom Report Query Prompt



If the Crystal Reports is not linked to the query system, then the user will be presented with the Report Preview window:

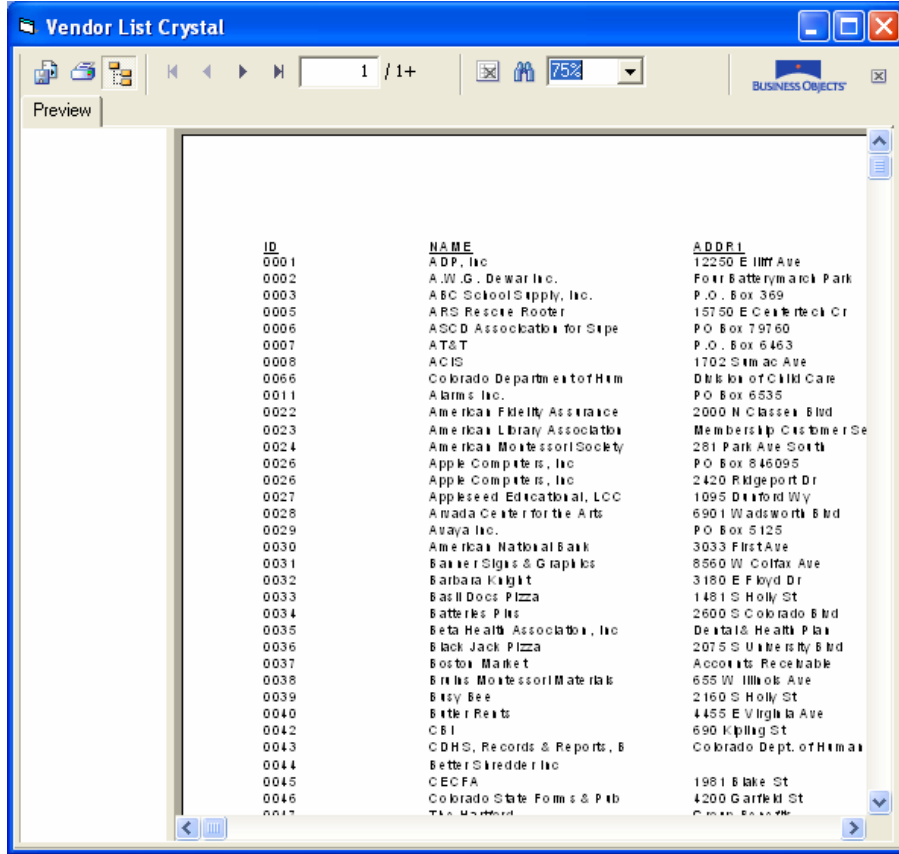


Figure 1-9. Crystal Report Preview

### Link Existing Crystal Reports to the Query System

- **Select Reports ▶ Custom Reports ▶ Custom Reports Setting.** Select the Query Info. Tab.

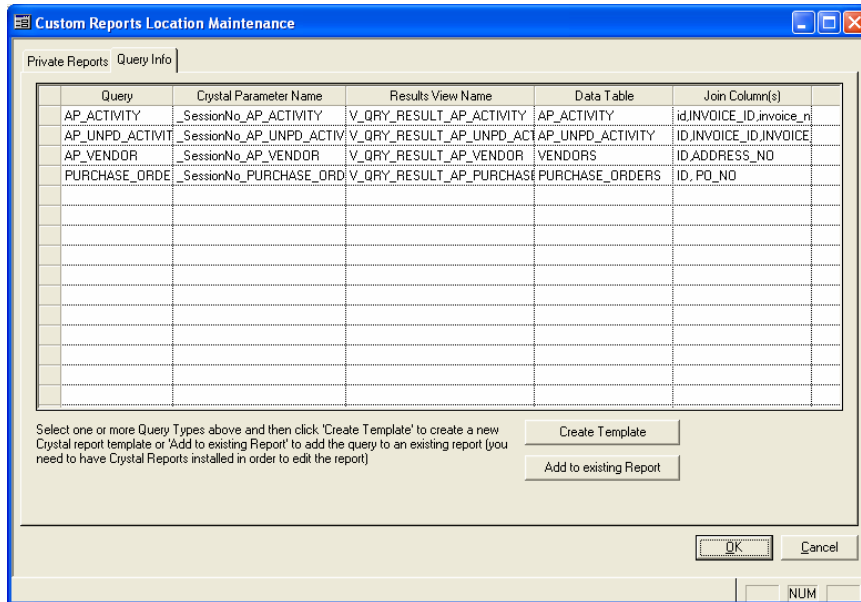


Figure 1-10. Query Info Tab

- Listed in the Query column are all the valid queries for the application you are logged into. In our example, we will select an **ACCOUNTS PAYABLE** Report that prints vendor information and activity. We need to select the **AP\_ACTIVITY** and **AP\_VENDOR** rows to link to our report. Highlight and press the **Add to existing Report** button.

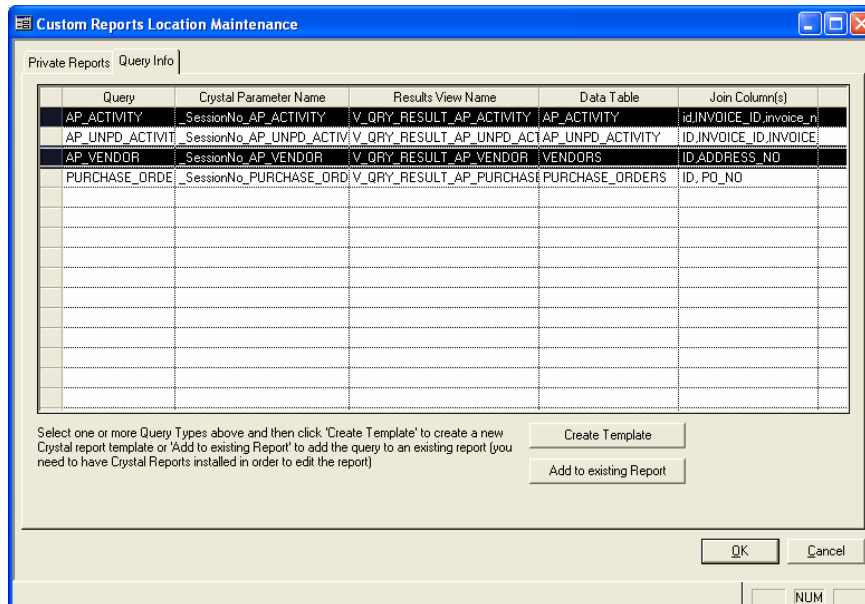


Figure 1-11. Add Query to Existing Reports

- Locate the report:

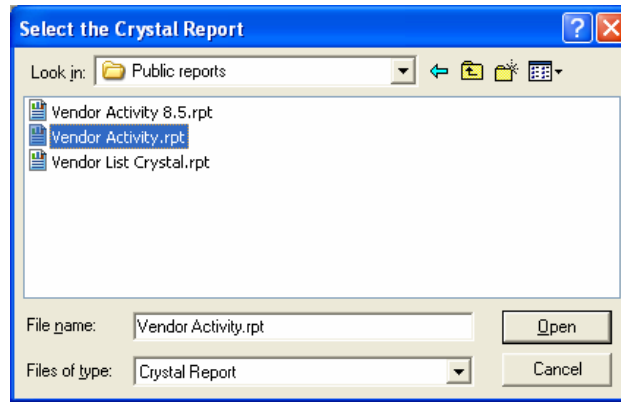


Figure 1-12. Select the Crystal Report

- Then 'Save' it to a new location or 'Rename' it. You cannot save it with the same name into the same location.

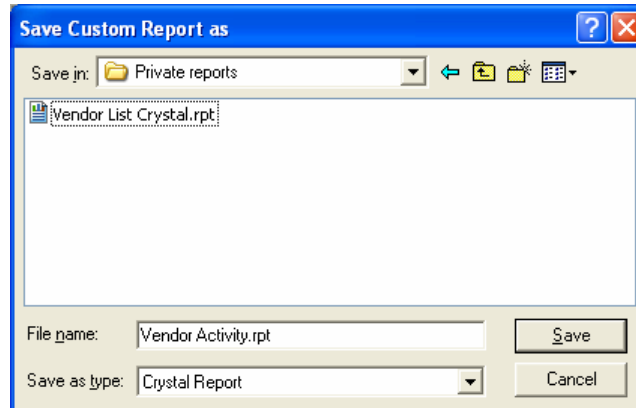


Figure 1-13. Save the Crystal Report

- The report file will be created and you will be prompted to edit the report. Answer **Yes**:

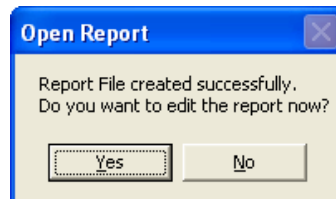


Figure 1-14.

- The report will open in Design mode:

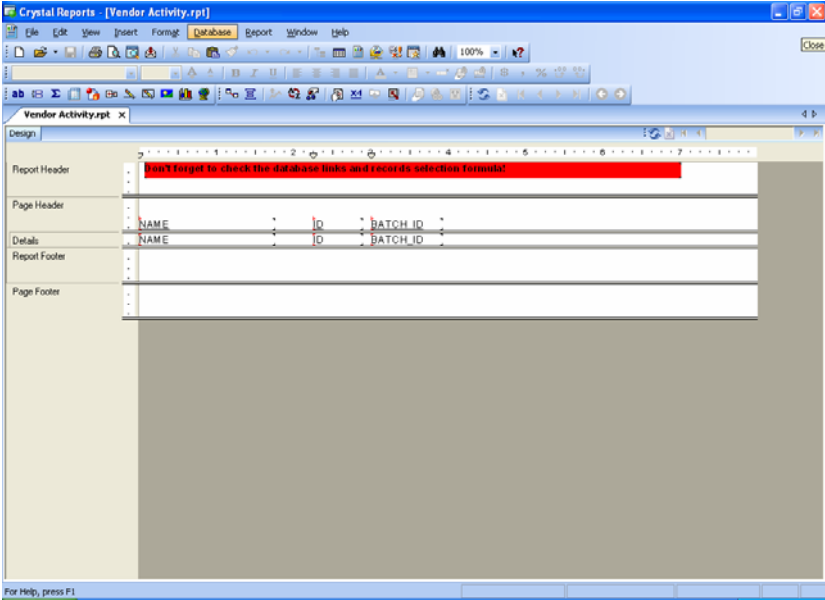


Figure 1-15. Crystal Report Design Mode

- Go to the Database Expert and edit the table links. For best results, replace the table and views you had on the report with the new ones.

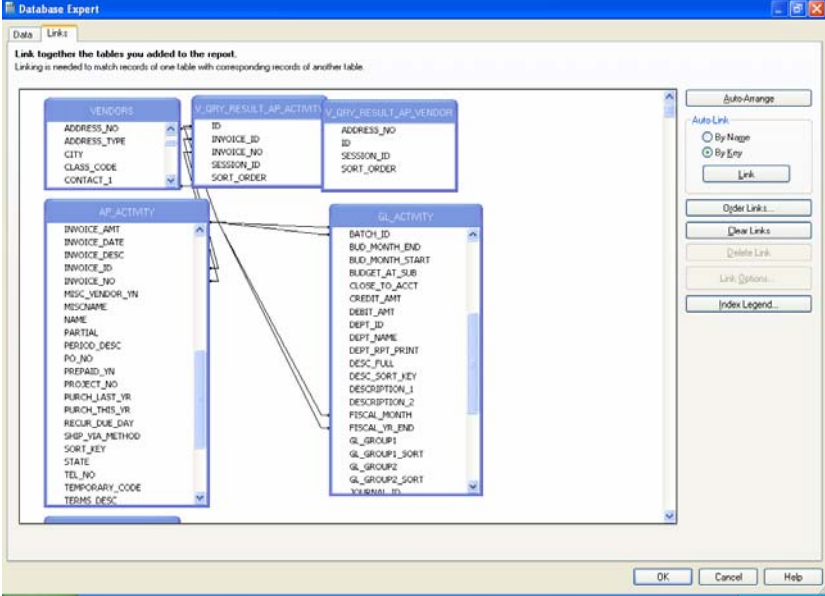


Figure 1-16. Crystal Report Table Linking

- The application will try to create the links between tables as best as it can. You need to review what the system has come up with and manually correct the links based on what you are expecting the report to do. For example the application will connect vendors to activity, using an INNER JOIN. If you need the report to display all vendors, even those without activity, you would need to change the link to a left OUTER JOIN.
- Make any other edits you wish to make to the report. When you are finish be sure to save the report in either the public or private locations you have established so that it can be run from *Senior Systems*.

**NOTE:** IN ORDER TO EDIT AN EXISTING Crystal Report, THE USER MUST HAVE CRYSTAL INSTALLED ON THEIR WORKSTATION

## CREATE A NEW CRYSTAL REPORT WITH A QUERY

### Create a New Crystal Report

- From **Reports ▶ Custom Reports ▶ Custom Reports Settings**, select the Query Info. Tab.

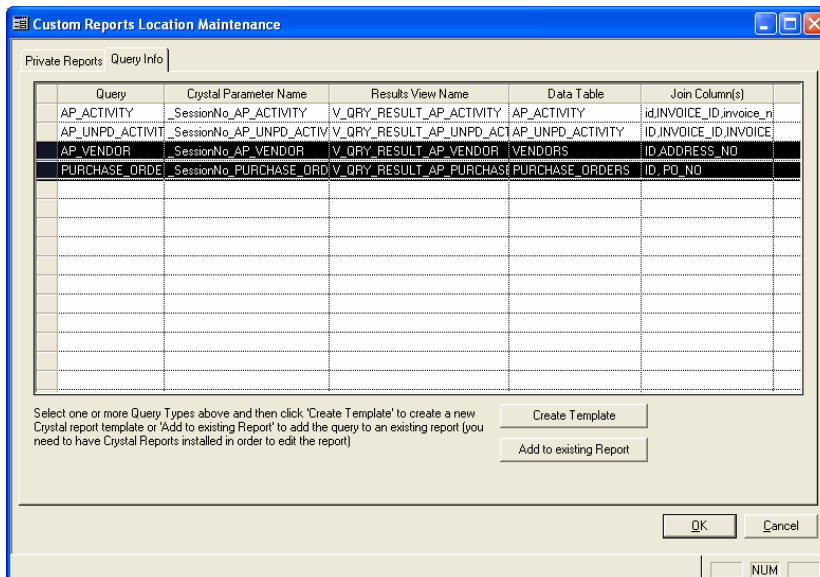


Figure 1-17. Create Template

- Highlight the *Senior Systems* queries you would like to use in this new report and select the **Create Template** button.

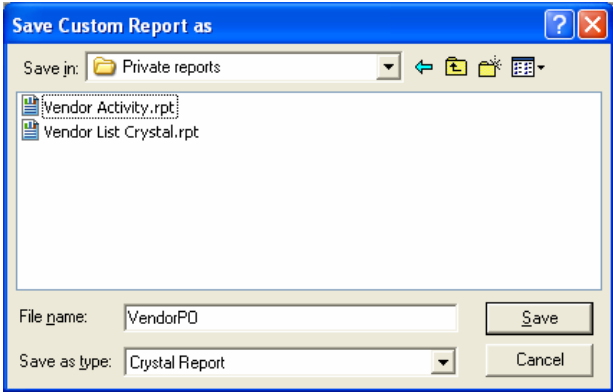


Figure 1-18. Save the Crystal Report

- Name the report and save it to a 'Private' or 'Public' location.
- The report file will be created and you will be prompted to edit the report. Answer **Yes**:

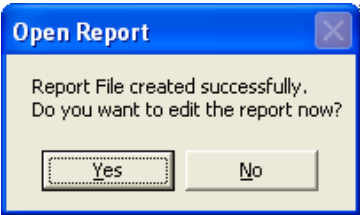


Figure 1-19.

- The report will open in Design mode with a reminder to check the database links:

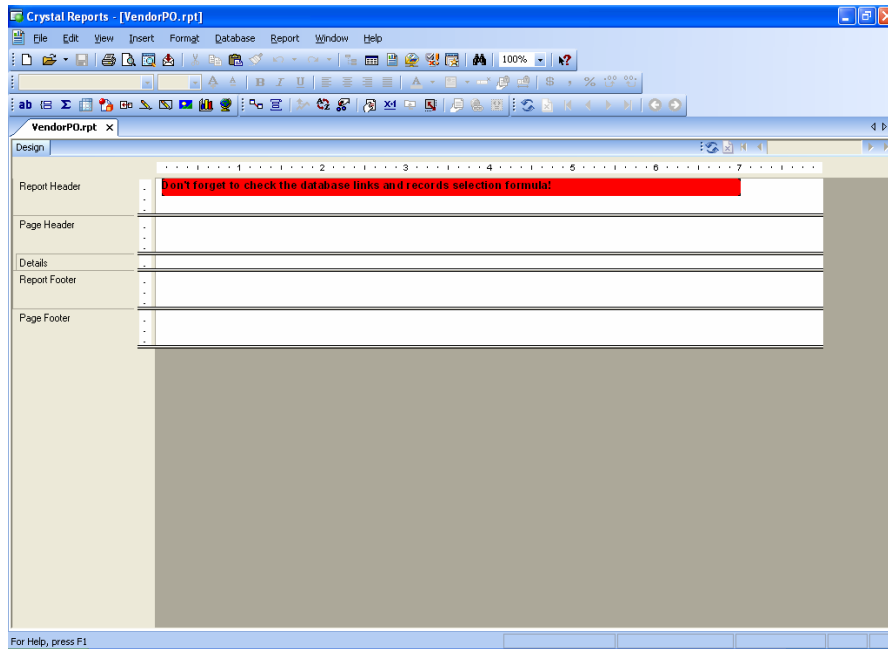


Figure 1-20. Crystal Report Design Mode

- Go to the Database Expert and edit the table links:

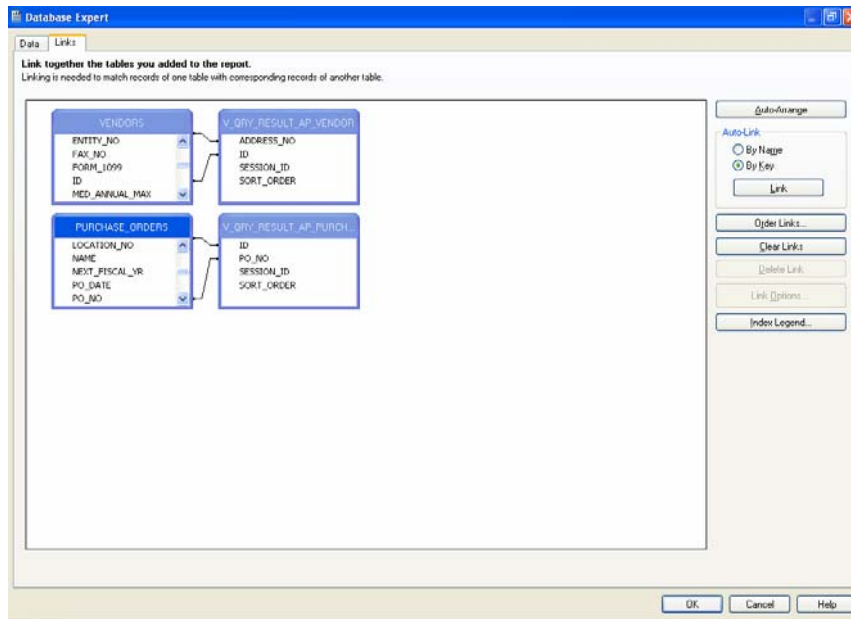


Figure 1-21. Crystal Report Link Tables

- The application will try to create the links between tables as best as it can. You need to review what the system has come up with and manually correct the links based on what you are expecting the report to do. For example the application will connect vendors to purchase orders, using an INNER JOIN. If you need the report to display all vendors, even those without purchase orders, you would need to change the link to a left OUTER JOIN.
- Make your additional edits to the report such as adding columns and formatting. When you are finished save the report into either the public or private location you have established so the report can now be run from *Senior Systems* with a query prompt.

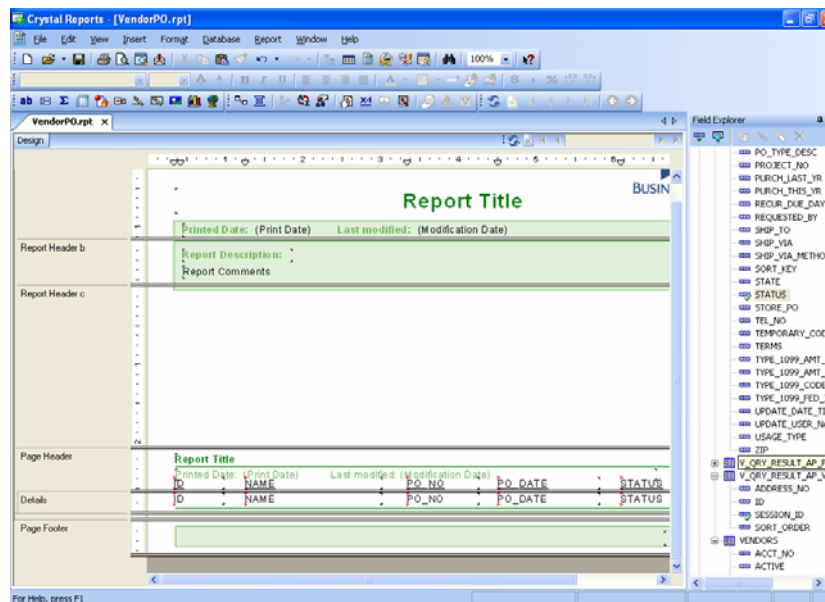


Figure 1-22. Crystal Reports Design Mode

**NOTES:** IN ORDER TO EDIT A Crystal Report USING THE QUERY TEMPLATE, THE USER MUST HAVE CRYSTAL INSTALLED ON THEIR WORKSTATION.

IF YOU HAVE A Crystal Report THAT CONNECTS TO A DATABASE OTHER THEN A *SENIOR SYSTEMS* DATABASE, THE REPORT WILL NOT RUN FROM THE MENU. IT MUST BE RUN OUTSIDE OF THE *SENIOR SYSTEMS* APPLICATIONS.



**NOTE:** IF YOU HAVE A Crystal Report THAT CONNECTS TO 2 DATABASES, IT CANNOT BE RUN FROM THE *SENIOR SYSTEMS* MENU.

IF YOU HAVE A REPORT WRITTEN IN ACCESS OR ANOTHER REPORT WRITER THAT DOES USE THE *SENIOR SYSTEMS* DATABASE (VIA ODBC) IT CANNOT BE RUN FROM THE *SENIOR SYSTEMS* MENU. THE INTERGRATION OUTLINED IN THIS DOCUMENT ONLY APPLIES TO REPORTS WRITTEN IN CRYSTAL.

## **HOSTED DATABASES**

- If *Senior Systems* is hosting your school's database, you currently have a folder on the server in which to store documents and files. You can use this location to store your Public and Private Crystal Reports.
  
- You do not need to run workstation setup as described on page 2.
  
- Currently, a hosted school cannot create their own Crystal Reports or edit them. If you have Crystal Reports that *Senior Systems* created for you, they will need to be linked to the query system. Please contact *Senior Systems* Support for assistance with this.
  
- If you would like to create your own Crystal Reports in the future, please contact *Senior Systems* Support so that a license can be ordered for you and your database configured properly.

### APPENDIX

Following is an alphabetical list by application of the queries available in each application. The list will also reveal the *Senior Systems* base table name it uses and the column joining one table to another.

#### Admissions

##### *Applicants*

Crystal Parameter Name: \_SessionNo\_AD\_APPLICANT  
Base Table: V\_AD\_APPLICANT  
Query Results View: V\_QRY\_RESULT\_AD\_APPLICANT  
Join Columns: RECORD\_NO

##### *Checklist*

Crystal Parameter Name: \_SessionNo\_AD\_CHECKLIST  
Base Table: AD\_CHECKLIST  
Query Results View: V\_QRY\_RESULT\_AD\_CHECKLIST  
Join Columns: CHECKLIST\_ROWID

##### *Mailing Lists*

Crystal Parameter Name: \_SessionNo\_AD\_MAILLIST  
Base Table: AD\_MAIL\_LIST  
Query Results View: V\_QRY\_RESULT\_AD\_MAILLIST  
Join Columns: SORT\_KEY

##### *Addresses*

Crystal Parameter Name: \_SessionNo\_AD\_ADDRALL  
Base Table: V\_AD\_ADDR  
Query Results View: V\_QRY\_RESULT\_AD\_ADDRALL  
Join Columns: ADDRESS\_NO

##### *Schools*

Crystal Parameter Name: \_SessionNo\_AD\_SCHOOLS  
Base Table: V\_SCHOOLS  
Query Results View: V\_QRY\_RESULT\_AD\_SCHOOLS  
Join Columns: SORT\_KEY

##### *Decisions*

Crystal Parameter Name: \_SessionNo\_AD\_DECISIONS  
Base Table: V\_AD\_DECISION  
Query Results View: V\_QRY\_RESULT\_AD\_DECISIONS  
Join Columns: DECISION\_ROWID

##### *Test Scores*

Crystal Parameter Name: \_SessionNo\_AD\_TESTSCORES  
Base Table: AD\_TEST\_SCORE  
Query Results View: V\_QRY\_RESULT\_AD\_TESTSCORES  
Join Columns: TEST\_ROWID

## Alumni Development

### *Funds*

Crystal Parameter Name:    \_sessionNo\_AL\_FUND  
 Base Table:                   AD\_DEVEL\_FUNDS  
 Query Results View:         V\_QRY\_RESULT\_AL\_FUND  
 Join Columns:                ID

### *Appeals*

Crystal Parameter Name:    \_sessionNo\_AL\_APPEALMASTER  
 Base Table:                 AL\_APPEAL  
 Query Results View:        V\_QRY\_RESULT\_AL\_APPEALMASTER  
 Join Columns:                APPEAL\_NO

### *Tracking*

Crystal Parameter Name:    \_sessionNo\_AL\_TRACK  
 Base Table:                 ALR\_CONS\_TRACK  
 Query Results View:        V\_QRY\_RESULT\_AL\_TRACK  
 Join Columns:                RECORD\_INDEX

### *Solicitors*

Crystal Parameter Name:    \_sessionNo\_AL\_SOLICITOR  
 Base Table:                 ALR\_CONS\_SOLICITOR  
 Query Results View:        V\_QRY\_RESULT\_AL\_SOLICITOR  
 Join Columns:                MGR\_RECORD\_INDEX

### *Relationships*

Crystal Parameter Name:    \_sessionNo\_AL\_RELATION  
 Base Table:                 V\_CONS\_RELATION  
 Query Results View:        V\_QRY\_RESULT\_AL\_RELATION  
 Join Columns:                RELATION\_RECORD\_NO

### *Prospect Moves*

Crystal Parameter Name:    \_sessionNo\_AL\_MOVES  
 Base Table:                 ALR\_CONS\_MOVES  
 Query Results View:        V\_QRY\_RESULT\_AL\_MOVES  
 Join Columns:                RECORD\_NO

### *Class Notes*

Crystal Parameter Name:    \_sessionNo\_AL\_NOTES  
 Base Table:                 ALR\_CONS\_CLASS\_NOTES  
 Query Results View:        V\_QRY\_RESULT\_AL\_NOTES  
 Join Columns:                NOTES\_ID

### *Events*

Crystal Parameter Name:    \_sessionNo\_AL\_EVENTS  
 Base Table:                 V\_EV\_CONS\_ATTENDEES  
 Query Results View:        V\_QRY\_RESULT\_AL\_EVENTS  
 Join Columns:                CONS\_RECORD\_NO

### *Constituents*

Crystal Parameter Name: \_SessionNo\_AL\_CONSTITUENT  
Base Table: V\_CONSTITUENT  
Query Results View: V\_QRY\_RESULT\_AL\_CONSTITUENT  
Join Columns: RECORD\_NO

### *Volunteer Activities*

Crystal Parameter Name: \_SessionNo\_AL\_VOLUNTEER\_ACT  
Base Table: V\_AL\_MEMBERSHIP\_ACT  
Query Results View: V\_QRY\_RESULT\_AL\_VOLUNTEER\_ACT  
Join Columns: RECORD\_INDEX

### *Memberships*

Crystal Parameter Name: \_SessionNo\_AL\_MEMBERSHIPS  
Base Table: V\_AL\_MEMBERSHIP  
Query Results View: V\_QRY\_RESULT\_AL\_MEMBERSHIPS  
Join Columns: RECORD\_INDEX

### *Addresses*

Crystal Parameter Name: \_SessionNo\_AL\_ADDRESSALL  
Base Table: V\_CONS\_ADDR\_ALL  
Query Results View: V\_QRY\_RESULT\_AL\_ADDRESSALL  
Join Columns: ADDRESS\_NO

### *Pledges*

Crystal Parameter Name: \_SessionNo\_AL\_PLEDGE  
Base Table: V\_AL\_PLEDGE  
Query Results View: V\_QRY\_RESULT\_AL\_PLEDGE  
Join Columns: RECORD\_INDEX

### *Gifts*

Crystal Parameter Name: \_SessionNo\_AL\_GIFT  
Base Table: V\_AL\_GIFT  
Query Results View: V\_QRY\_RESULT\_AL\_GIFT  
Join Columns: RECORD\_INDEX

### *Campaigns*

Crystal Parameter Name: \_SessionNo\_AL\_CAMPAIGN  
Base Table: DEVEL\_CAMPAIGN  
Query Results View: V\_QRY\_RESULT\_AL\_CAMPAIGN  
Join Columns: CAMPAIGN\_NO

### *Tracking*

Crystal Parameter Name: \_SessionNo\_AL\_TRACK  
Base Table: ALR\_CONS\_TRACK  
Query Results View: V\_QRY\_RESULT\_AL\_TRACK  
Join Columns: RECORD\_INDEX

### *Attributes*

Crystal Parameter Name: \_SessionNo\_AL\_ATTRIBUTE  
Base Table: ALR\_CONS\_ATTRIBUTE  
Query Results View: V\_QRY\_RESULT\_AL\_ATTRIBUTE  
Join Columns: RECORD\_INDEX

***Giving Levels***

Crystal Parameter Name:    \_SessionNo\_AL\_GIVINGLEVELS  
Base Table:                   AL\_GIVING\_LEVEL  
Query Results View:        V\_QRY\_RESULT\_AL\_GIVINGLEVELS  
Join Columns:               RECORD\_NO

***Schools***

Crystal Parameter Name:    \_SessionNo\_AL\_SCHOOLMASTER  
Base Table:                   EDUC\_SCHOOL  
Query Results View:        V\_QRY\_RESULT\_AL\_SCHOOLMASTER  
Join Columns:               RECORD\_NO

## **Accounts Payable**

### ***AP\_ACTIVITY***

Crystal Parameter Name: *\_SessionNo\_AP\_ACTIVITY*  
Base Table: *AP\_ACTIVITY*  
Query Results View: *V\_QRY\_RESULT\_AP\_ACTIVITY*  
Join Columns: *ID,INVOICE\_ID,INVOICE\_NO*

### ***AP\_UNPD\_ACTIVITY***

Crystal Parameter Name: *\_SessionNo\_AP\_UNPD\_ACTIVITY*  
Base Table: *AP\_UNPD\_ACTIVITY*  
Query Results View: *V\_QRY\_RESULT\_AP\_UNPD\_ACTIVITY*  
Join Columns: *ID,INVOICE\_ID,INVOICE\_NO*

### ***PURCHASE\_ORDERS***

Crystal Parameter Name: *\_SessionNo\_PURCHASE\_ORDERS*  
Base Table: *PURCHASE\_ORDERS*  
Query Results View: *V\_QRY\_RESULT\_AP\_PURCHASE\_ORDER* View:  
Join Columns: *ID, PO\_NO*

### ***AP\_VENDOR***

Crystal Parameter Name: *\_SessionNo\_AP\_VENDOR*  
Base Table: *VENDORS*  
Query Results View: *V\_QRY\_RESULT\_AP\_VENDOR*  
Join Columns: *ID,ADDRESS\_NO*

## **Accounts Receivable**

### ***AR\_ADDR***

Crystal Parameter Name: *\_SessionNo\_AR\_ADDR*  
Base Table: *AR\_ADDR*  
Query Results View: *V\_QRY\_RESULT\_AR\_ADDR*  
Join Columns: *ID,ADDRESS\_NO*

### ***AR\_STUDENT***

Crystal Parameter Name: *\_SessionNo\_AR\_STUDENT*  
Base Table: *AR\_STUDENT*  
Query Results View: *V\_QRY\_RESULT\_AR\_STUDENT*  
Join Columns: *ID*

## **Campus Store**

### *Purchase Orders*

Crystal Parameter Name: `_SessionNo_CS_PORECEIVING`  
Base Table: `PURCHASE_ORDERS`  
Query Results View: `V_QRY_RESULT_CS_PORECEIVING`  
Join Columns: `PO_NO`

### *Customers*

Crystal Parameter Name: `_SessionNo_CS_CUSTOMER`  
Base Table: `V_CS_CUSTOMER`  
Query Results View: `V_QRY_RESULT_CS_CUSTOMER`  
Join Columns: `ID`

### *Purchase Orders*

Crystal Parameter Name: `_SessionNo_CS_PURCHASEORDERS`  
Base Table: `PURCHASE_ORDERS`  
Query Results View: `V_QRY_RESULT_CS_PURCHASEORDERS`  
Join Columns: `PO_NO`

## **Enrollment Management**

### *Students*

Crystal Parameter Name: `_SessionNo_EM_STUDENT`  
Base Table: `EMR_STUDENT`  
Query Results View: `V_QRY_RESULT_EM_STUDENT`  
Join Columns: `STUDENT_KEY`

### *Addresses*

Crystal Parameter Name: `_SessionNo_EM_ADDRALL`  
Base Table: `EMR_ADDR`  
Query Results View: `V_QRY_RESULT_EM_ADDRALL`  
Join Columns: `ADDRESS_NO`

### Events

#### *Students*

Crystal Parameter Name: \_SessionNo\_RG\_STUDENT  
Base Table: V\_RG\_STUDENT  
Query Results View: V\_QRY\_RESULT\_RG\_STUDENT  
Join Columns: ID

#### *Hole Sponsorship*

Crystal Parameter Name: \_SessionNo\_EV\_HOLE\_SPONSORSHIP  
Base Table: V\_EV\_HOLE\_SPONSORSHIP  
Query Results View: V\_QRY\_RESULT\_EV\_HOLE\_SPONSOR  
Join Columns: RECORD\_NO

#### *Tee Times*

Crystal Parameter Name: \_SessionNo\_EV\_TEE\_TIMES  
Base Table: V\_EV\_TEE\_TIMES  
Query Results View: V\_QRY\_RESULT\_EV\_TEE\_TIMES  
Join Columns: ACTIVITY\_JOIN

#### *Underwritings*

Crystal Parameter Name: \_SessionNo\_EV\_UNDERWRITE  
Base Table: V\_EVENT\_SPONSORSHIP\_GIVING  
Query Results View: V\_QRY\_RESULT\_EV\_UNDERWRITE  
Join Columns: SPONSORSHIP\_NO

#### *Locations*

Crystal Parameter Name: \_SessionNo\_EV\_LOCATION  
Base Table: V\_EV\_LOCATION  
Query Results View: V\_QRY\_RESULT\_EV\_LOCATION  
Join Columns: RECORD\_NO

#### *Table Assignment*

Crystal Parameter Name: \_SessionNo\_EV\_TABLE\_ASSIGN  
Base Table: V\_EV\_TABLE\_ASSIGNMENT  
Query Results View: V\_QRY\_RESULT\_EV\_TABLE\_ASSIGN  
Join Columns: ACTIVITY\_JOIN

#### *Constituents*

Crystal Parameter Name: \_SessionNo\_EV\_CONSTITUENT  
Base Table: V\_CONSTITUENT  
Query Results View: V\_QRY\_RESULT\_EV\_CONSTITUENT  
Join Columns: RECORD\_NO

#### *Tracking*

Crystal Parameter Name: \_SessionNo\_EV\_TRACK  
Base Table: ALR\_CONS\_TRACK  
Query Results View: V\_QRY\_RESULT\_EV\_TRACK  
Join Columns: RECORD\_INDEX

#### *Solicitors*

Crystal Parameter Name: \_SessionNo\_EV\_SOLICITOR  
Base Table: ALR\_CONS\_SOLICITOR  
Query Results View: V\_QRY\_RESULT\_EV\_SOLICITOR  
Join Columns: MGR\_RECORD\_INDEX



***Relationships***

Crystal Parameter Name: \_SessionNo\_EV\_RELATION  
Base Table: V\_CONS\_RELATION  
Query Results View: V\_QRY\_RESULT\_EV\_RELATION  
Join Columns: RELATION\_RECORD\_NO

***Prospect Moves***

Crystal Parameter Name: \_SessionNo\_EV\_MOVES  
Base Table: ALR\_CONS\_MOVES  
Query Results View: V\_QRY\_RESULT\_EV\_MOVES  
Join Columns: RECORD\_NO

***Class Notes***

Crystal Parameter Name: \_SessionNo\_EV\_NOTES  
Base Table: ALR\_CONS\_CLASS\_NOTES  
Query Results View: V\_QRY\_RESULT\_EV\_NOTES  
Join Columns: NOTES\_ID

***Memberships***

Crystal Parameter Name: \_SessionNo\_EV\_MEMBERSHIPS  
Base Table: V\_AL\_MEMBERSHIP  
Query Results View: V\_QRY\_RESULT\_EV\_MEMBERSHIPS  
Join Columns: RECORD\_INDEX

***Gifts***

Crystal Parameter Name: \_SessionNo\_EV\_GIFT  
Base Table: V\_AL\_GIFT  
Query Results View: V\_QRY\_RESULT\_EV\_GIFT  
Join Columns: RECORD\_INDEX

***Tracking***

Crystal Parameter Name: \_SessionNo\_AL\_TRACK  
Base Table: ALR\_CONS\_TRACK  
Query Results View: V\_QRY\_RESULT\_AL\_TRACK  
Join Columns: RECORD\_INDEX

***Attributes***

Crystal Parameter Name: \_SessionNo\_EV\_ATTRIBUTE  
Base Table: ALR\_CONS\_ATTRIBUTE  
Query Results View: V\_QRY\_RESULT\_EV\_ATTRIBUTE  
Join Columns: RECORD\_INDEX

***Events***

Crystal Parameter Name: \_SessionNo\_EV\_EVENT  
Base Table: V\_EVENT\_ACTIVITIES  
Query Results View: V\_QRY\_RESULT\_EV\_EVENT  
Join Columns: ACTIVITY\_JOIN

***Activities***

Crystal Parameter Name: \_SessionNo\_EV\_ACTIVITY  
Base Table: V\_EVENT\_ACTIVITIES  
Query Results View: V\_QRY\_RESULT\_EV\_ACTIVITY  
Join Columns: ACTIVITY\_JOIN

### *Seating Assignments*

Crystal Parameter Name: \_SessionNo\_EV\_SEATING\_ASSIGN  
Base Table: V\_EVENT\_SEATING\_ASSIGNMENT  
Query Results View: V\_QRY\_RESULT\_EV\_SEATING\_ASSIGN  
Join Columns: ATTENDEE\_JOIN

### *Attendees*

Crystal Parameter Name: \_SessionNo\_EV\_ATTENDEE  
Base Table: V\_EV\_ATTENDEE\_ADDRESS  
Query Results View: V\_QRY\_RESULT\_EV\_ATTENDEE  
Join Columns: ATTENDEE\_JOIN

### *Students*

Crystal Parameter Name: \_SessionNo\_EV\_RG\_STUDENT  
Base Table: V\_RG\_STUDENT  
Query Results View: V\_QRY\_RESULT\_EV\_RG\_STUDENT  
Join Columns: ID

## **Financial Aid**

### *Applicants*

Crystal Parameter Name: \_SessionNo\_FA\_STUDENT  
Base Table: V\_FA\_STUDENT  
Query Results View: V\_QRY\_RESULT\_FA\_STUDENT  
Join Columns: FA\_RECORD\_NO

### *Student Grants*

Crystal Parameter Name: \_SessionNo\_FA\_GRANTS  
Base Table: V\_FA\_GRANTS  
Query Results View: V\_QRY\_RESULT\_FA\_GRANTS  
Join Columns: GRANTROWID

### *Checklist*

Crystal Parameter Name: \_SessionNo\_FA\_CHECKLIST  
Base Table: V\_FA\_CHECKLIST  
Query Results View: V\_QRY\_RESULT\_FA\_CHECKLIST  
Join Columns: CHECKLIST\_ROWID

## **Fixed Assets**

### *Assets*

Crystal Parameter Name: *\_SessionNo\_FX\_ASSET*  
Base Table: *V\_FX\_ASSETS*  
Query Results View: *V\_QRY\_RESULT\_FX\_ASSET*  
Join Columns: *RECORD\_NO*

## **General Ledger**

### *GL\_ACCT*

Crystal Parameter Name: *\_SessionNo\_GL\_ACCT*  
Base Table: *GL\_ACCT*  
Query Results View: *V\_QRY\_RESULT\_GL\_ACCT*  
Join Columns: *ACCT\_NO*

## Registrar

### *Classes*

Crystal Parameter Name: \_SessionNo\_RG\_SS\_CLASS  
Base Table: RG\_CLASS\_SS  
Query Results View: V\_QRY\_RESULT\_RG\_SS\_CLASS  
Join Columns: SECTION\_ID

### *Class Discounts*

Crystal Parameter Name: \_SessionNo\_RG\_SS\_CLASSDISC  
Base Table: RG\_CLASS\_SS\_DISC  
Query Results View: V\_QRY\_RESULT\_RG\_SS\_CLASSDISC  
Join Columns: PRICE\_LEVEL\_NO

### *Grade Comment Numbers*

Crystal Parameter Name: \_SessionNo\_RGCMTNO  
Base Table: RG\_CMTNO  
Query Results View: V\_QRY\_RESULT\_RGCMTNO  
Join Columns: NO

### *GPA*

Crystal Parameter Name: \_SessionNo\_RG\_GPA  
Base Table: RG\_GPA  
Query Results View: V\_QRY\_RESULT\_RG\_GPA  
Join Columns: STUDENT\_ID

### *GPA (All Years)*

Crystal Parameter Name: \_SessionNo\_RG\_V\_RG\_GPA  
Base Table: V\_RG\_GPA  
Query Results View: V\_QRY\_RESULT\_RG\_V\_RG\_GPA  
Join Columns: GPA\_ROWID

### *Programs*

Crystal Parameter Name: \_SessionNo\_RG\_SS\_ALLPROG  
Base Table: RG\_SCHOOL\_PROGRAMS  
Query Results View: V\_QRY\_RESULT\_RG\_SS\_ALLPROG  
Join Columns: ID

### *Academic History*

Crystal Parameter Name: \_SessionNo\_RG\_ACADHIST  
Base Table: V\_ACAD\_HISTORY  
Query Results View: V\_QRY\_RESULT\_RG\_ACADHIST  
Join Columns: HISTORY\_ROWID

### *Course History*

Crystal Parameter Name: \_SessionNo\_RG\_SS\_COURSEHIST  
Base Table: V\_ACAD\_HISTORY  
Query Results View: V\_QRY\_RESULT\_RG\_SS\_COURSEHIST  
Join Columns: HISTORY\_ROWID

### *Classes*

Crystal Parameter Name: \_SessionNo\_RG\_SS\_FACSCCHEDULE  
Base Table: V\_FAC\_SCHED\_SS  
Query Results View: View:

V\_QRY\_RESULT\_RG\_SS\_FACSCCHEDULE

Join Columns: SCHEDKEY

***Lockers***

Crystal Parameter Name: \_SessionNo\_RG\_SS\_LOCKERS

Base Table: V\_LOCKERS

Query Results View: V\_QRY\_RESULT\_RG\_SS\_LOCKERS

Join Columns: LOCKERBLOCKKEY

***Classes***

Crystal Parameter Name: \_SessionNo\_RG\_SS\_ROOMSCHEDULE

Base Table: V\_ROOM\_SCHED\_SS

Query Results View: V\_QRY\_RESULT\_RG\_SS\_ROOMSCH

Join Columns: SCHEDKEY

***Addresses***

Crystal Parameter Name: \_SessionNo\_RG\_SS\_ADDRALL

Base Table: V\_SS\_ADDR

Query Results View: V\_QRY\_RESULT\_RG\_SS\_ADDRALL

Join Columns: ADDRESS\_NO

***Attendance***

Crystal Parameter Name: \_SessionNo\_RG\_SS\_ATTENDANCE

Base Table: V\_SS\_ATTENDANCE

Query Results View: V\_QRY\_RESULT\_RG\_SS\_ATTENDANCE

Join Columns: ATTEND\_ROWID

***Checklists***

Crystal Parameter Name: \_SessionNo\_RG\_SS\_CHECKLIST

Base Table: V\_SS\_CHECKLIST

Query Results View: V\_QRY\_RESULT\_RG\_SS\_CHECKLIST

Join Columns: CHECKLISTSTUKEY

***Courses***

Crystal Parameter Name: \_SessionNo\_RG\_SS\_COURSE

Base Table: V\_SS\_COURSE

Query Results View: V\_QRY\_RESULT\_RG\_SS\_COURSE

Join Columns: ID

***Course Discounts***

Crystal Parameter Name: \_SessionNo\_RG\_SS\_COURSEDISC

Base Table: V\_SS\_COURSE\_DISC

Query Results View: V\_QRY\_RESULT\_RG\_SS\_COURSEDISC

Join Columns: PRICE\_LEVEL\_NO

***Inquiries***

Crystal Parameter Name: \_SessionNo\_RG\_SS\_INQUIRY

Base Table: V\_SS\_INQUIRY

Query Results View: V\_QRY\_RESULT\_RG\_SS\_INQUIRY

Join Columns: RECORD\_NO

***Activities***

Crystal Parameter Name: \_SessionNo\_RG\_ACTIVITIES

Base Table: RG\_STU\_ACTIVITIES

Query Results View: V\_QRY\_RESULT\_RG\_ACTIVITIES

	Join Columns:	ACTIVITY_ROWID	
<b>Test Scores</b>	Crystal Parameter Name:	_SessionNo_RG_TESTSCORES	
	Base Table:	TEST_SCORE	
	Query Results View:	V_QRY_RESULT_RG_TESTSCORES	
	Join Columns:	TEST_ROWID	
<b>Addresses</b>	Crystal Parameter Name:	_SessionNo_RG_ADDRALL	
	Base Table:	V_RG_ADDR	
	Query Results View:	V_QRY_RESULT_RG_ADDRALL	
	Join Columns:	ADDRESS_NO	
<b>Grade Comments</b>	Crystal Parameter Name:	_SessionNo_RG_GRADECOMMENT	
	Base Table:	V_RG_GRADE_COMMENTS	
	Query Results View:	V_QRY_RESULT_RG_GRADECOMMENT	View:
	Join Columns:	COMMENT_ROWID	
<b>Vehicles</b>	Crystal Parameter Name:	_SessionNo_RG_SS_VEHICLE	
	Base Table:	V_STUDENT_VEHICLE	
	Query Results View:	V_QRY_RESULT_RG_SS_VEHICLE	
	Join Columns:	VEHICLE_ROWID	
<b>Vehicles</b>	Crystal Parameter Name:	_SessionNo_RG_VEHICLE	
	Base Table:	V_STUDENT_VEHICLE	
	Query Results View:	V_QRY_RESULT_RG_VEHICLE	
	Join Columns:	VEHICLE_ROWID	
<b>Classes (Next Year)</b>	Crystal Parameter Name:	_SessionNo_RG_SCHEDULE_NY	
	Base Table:	V_RG_STU_SCHED_NY	
	Query Results View:	V_QRY_RESULT_RG_SCHEDULE_NY	
	Join Columns:	SCHEDKEY	
<b>Classes/Grades</b>	Crystal Parameter Name:	_SessionNo_RG_SCHEDULE	
	Base Table:	V_RG_STU_SCHED	
	Query Results View:	V_QRY_RESULT_RG_SCHEDULE	
	Join Columns:	SCHEDKEY	
<b>Dorms/Rooms</b>	Crystal Parameter Name:	_SessionNo_RG_SS_DORMROOM	
	Base Table:	V_DORMS_ROOMS	
	Query Results View:	V_QRY_RESULT_RG_SS_DORMROOM	
	Join Columns:	DORM_ROOM_KEY	
<b>Attendance (Daily)</b>	Crystal Parameter Name:	_SessionNo_RG_ATTENDDAY	
	Base Table:	V_RG_ATTENDDAY	
	Query Results View:	V_QRY_RESULT_RG_ATTENDDAY	

<b><i>Attendance (Class)</i></b>	Join Columns: ATTEND_ROWID  Crystal Parameter Name: _SessionNo_RG_ATTENDANCE Base Table: V_RG_ATTENDANCE Query Results View: V_QRY_RESULT_RG_ATTENDANCE Join Columns: ATTEND_ROWID	
<b><i>Programs</i></b>	Crystal Parameter Name: _SessionNo_RG_SS_PROGRAMS Base Table: RG_SCHOOLSPROG Query Results View: V_QRY_RESULT_RG_SS_PROGRAMS Join Columns: STUPROG_ROWID	
<b><i>Programs</i></b>	Crystal Parameter Name: _SessionNo_RG_PROGRAMS Base Table: RG_SCHOOLSPROG Query Results View: V_QRY_RESULT_RG_PROGRAMS Join Columns: STUPROG_ROWID	
<b><i>Siblings</i></b>	Crystal Parameter Name: _SessionNo_RG_SIBLINGS Base Table: V_RG_SIBLINGS Query Results View: V_QRY_RESULT_RG_SIBLINGS Join Columns: STUDENT_ID	
<b><i>Application Programs</i></b>	Crystal Parameter Name: _SessionNo_RG_PL_APPPROGRAMS Base Table: V_PL_STU_PROG_ALL Query Results View: V_QRY_RESULT_RG_PL_APPPROGRAMS Join Columns: APPPROG_ROWID	View:
<b><i>Applications</i></b>	Crystal Parameter Name: _SessionNo_RG_PL_APPLICATIONS Base Table: V_PL_APPLICATIONS Query Results View: V_QRY_RESULT_RG_PL_APPLIC Join Columns: APP_NO	
<b><i>Discipline</i></b>	Crystal Parameter Name: _SessionNo_RG_DN_DISCIPLINE Base Table: RG_DISCIPLINE Query Results View: V_QRY_RESULT_RG_DN_DISCIPLINE Join Columns: DISCIPLINE_ROWID	
<b><i>Weekends</i></b>	Crystal Parameter Name: _SessionNo_RG_DN_WEEKENDS Base Table: DN_WEEKENDS Query Results View: V_QRY_RESULT_RG_DN_WEEKENDS Join Columns: WEEKEND_ROWID	
<b><i>Course Recommendations</i></b>	Crystal Parameter Name: _SessionNo_RG_RECOMMEND Base Table: V_COURSE_RECOMMEND Query Results View: V_QRY_RESULT_RG_RECOMMEND Join Columns: RECOMMEND_ROWID	

### *Course Requests*

Crystal Parameter Name: \_SessionNo\_RG\_REQUESTS  
Base Table: V\_COURSE\_REQUESTS  
Query Results View: V\_QRY\_RESULT\_RG\_REQUESTS  
Join Columns: REQUEST\_ROWID

### *Schools*

Crystal Parameter Name: \_SessionNo\_RG\_SS\_SCHOOLS  
Base Table: V\_SCHOOLS  
Query Results View: V\_QRY\_RESULT\_RG\_SS\_SCHOOLS  
Join Columns: SORT\_KEY

### *Rooms*

Crystal Parameter Name: \_SessionNo\_RG\_SS\_ROOM  
Base Table: V\_ALL\_ROOMS  
Query Results View: V\_QRY\_RESULT\_RG\_SS\_ROOM  
Join Columns: NO

### *Departments*

Crystal Parameter Name: \_SessionNo\_RG\_SS\_DEPT  
Base Table: V\_DEPARTMENTS  
Query Results View: V\_QRY\_RESULT\_RG\_SS\_DEPT  
Join Columns: ID

### *Custom Fields*

Crystal Parameter Name: \_SessionNo\_RG\_SS\_FACULTY\_CUSTOM  
Base Table: V\_FACULTY\_CUSTOM  
Query Results View: V\_QRY\_RESULT\_RG\_SS\_FAC\_CUSTOM  
Join Columns: ID

### *Certifications*

Crystal Parameter Name: \_SessionNo\_RG\_SS\_FACULTY\_CERT  
Base Table: V\_FACULTY\_CERTIFIC  
Query Results View: V\_QRY\_RESULT\_SS\_FAC\_CERT  
Join Columns: FACCERT\_ROWID

### *Education*

Crystal Parameter Name: \_SessionNo\_RG\_SS\_FACULTY\_EDUC  
Base Table: V\_FACULTY\_EDUC  
Query Results View: V\_QRY\_RESULT\_RG\_SS\_FAC\_EDUC  
Join Columns: SCHOOL\_SORT\_KEY

### *Advisors*

Crystal Parameter Name: \_SessionNo\_RG\_SS\_FACULTY  
Base Table: V\_FACULTY\_ALL  
Query Results View: V\_QRY\_RESULT\_RG\_SS\_FACULTY  
Join Columns: ID

### *Faculty/Staff*

Crystal Parameter Name: \_SessionNo\_RG\_SS\_FACULTY\_ALL  
Base Table: V\_FACULTY\_ALL  
Query Results View: V\_QRY\_RESULT\_RG\_SS\_FACULTY\_ALL  
Join Columns: ID

View:



***Books***

Crystal Parameter Name:    \_SessionNo\_RG\_SS\_BOOK  
Base Table:                    V\_BOOK  
Query Results View:         V\_QRY\_RESULT\_RG\_SS\_BOOK  
Join Columns:                 RECORD\_NO

***Custom Fields (Next Year)***

Crystal Parameter Name:    \_SessionNo\_RG\_CUSTOM\_NY  
Base Table:                    V\_RG\_STU\_CUSTOM\_NY  
Query Results View:         V\_QRY\_RESULT\_RG\_CUSTOM\_NY  
Join Columns:                 STUDENT\_ID

***Custom Fields***

Crystal Parameter Name:    \_SessionNo\_RG\_SS\_CUSTOM  
Base Table:                    V\_RG\_STU\_CUSTOM  
Query Results View:         V\_QRY\_RESULT\_RG\_SS\_CUSTOM  
Join Columns:                 STUDENT\_ID

***Custom Fields***

Crystal Parameter Name:    \_SessionNo\_RG\_CUSTOM  
Base Table:                    V\_RG\_STU\_CUSTOM  
Query Results View:         V\_QRY\_RESULT\_RG\_CUSTOM  
Join Columns:                 STUDENT\_ID

***Medical Contacts***

Crystal Parameter Name:    \_SessionNo\_RG\_SS\_DOCTORS  
Base Table:                    V\_STUDENT\_DOCTORS  
Query Results View:         V\_QRY\_RESULT\_RG\_SS\_DOCTORS  
Join Columns:                 DOCTOR\_ROWID

***Medical Contacts***

Crystal Parameter Name:    \_SessionNo\_RG\_DOCTORS  
Base Table:                    V\_STUDENT\_DOCTORS  
Query Results View:         V\_QRY\_RESULT\_RG\_DOCTORS  
Join Columns:                 DOCTOR\_ROWID

***Health Information***

Crystal Parameter Name:    \_SessionNo\_RG\_SS\_HEALTH  
Base Table:                    V\_STUDENT\_HEALTH  
Query Results View:         V\_QRY\_RESULT\_RG\_SS\_HEALTH  
Join Columns:                 HEALTH\_RECORD\_NO

***Health Information***

Crystal Parameter Name:    \_SessionNo\_RG\_HEALTH  
Base Table:                    V\_STUDENT\_HEALTH  
Query Results View:         V\_QRY\_RESULT\_RG\_HEALTH  
Join Columns:                 HEALTH\_RECORD\_NO

### *Rank*

Crystal Parameter Name: \_SessionNo\_RG\_RANK  
Base Table: V\_RG\_RANK  
Query Results View: V\_QRY\_RESULT\_RG\_RANK  
Join Columns: RECORD\_INDEX

### *Students*

Crystal Parameter Name: \_SessionNo\_EV\_RG\_STUDENT  
Base Table: V\_RG\_STUDENT  
Query Results View: V\_QRY\_RESULT\_EV\_RG\_STUDENT  
Join Columns: ID

### *Students*

Crystal Parameter Name: \_SessionNo\_RG\_STUDENT  
Base Table: V\_RG\_STUDENT  
Query Results View: V\_QRY\_RESULT\_RG\_STUDENT  
Join Columns: ID

### *Students*

Crystal Parameter Name: \_SessionNo\_RG\_SS\_STUDENT  
Base Table: V\_SS\_STUDENT  
Query Results View: V\_QRY\_RESULT\_RG\_SS\_STUDENT  
Join Columns: ID

### *Classes/Grades*

Crystal Parameter Name: \_SessionNo\_RG\_SS\_SCHEDULE  
Base Table: V\_STU\_SCHED\_SS  
Query Results View: V\_QRY\_RESULT\_RG\_SS\_SCHEDULE  
Join Columns: SCHEDKEY

### *Checklists*

Crystal Parameter Name: \_SessionNo\_RG\_CHECKLIST  
Base Table: V\_RG\_CHECKLIST  
Query Results View: V\_QRY\_RESULT\_RG\_CHECKLIST  
Join Columns: CHECKLISTSTUKEY

### *Checklists (Next Year)*

Crystal Parameter Name: \_SessionNo\_RG\_CHECKLIST\_NY  
Base Table: V\_RG\_CHECKLIST\_NY  
Query Results View: V\_QRY\_RESULT\_RG\_CHECKLIST\_NY  
Join Columns: CHECKLISTSTUKEY

## Systems Administration

The System Administration application contains many of the My Backpack configuration and setup tables for several Senior Systems applications. Because of this access to other application, many of the queries available here are duplications of the queries you would find if you logged directly into the specific application.

### *Funds*

Crystal Parameter Name:    \_SessionNo\_AL\_FUND  
 Base Table:                    AD\_DEVEL\_FUNDS  
 Query Results View:         V\_QRY\_RESULT\_AL\_FUND  
 Join Columns:                 ID

### *Appeals*

Crystal Parameter Name:    \_SessionNo\_AL\_APPEALMASTER  
 Base Table:                    AL\_APPEAL  
 Query Results View:         V\_QRY\_RESULT\_AL\_APPEALMASTER  
 Join Columns:                 APPEAL\_NO

### *Campaigns*

Crystal Parameter Name:    \_SessionNo\_AL\_CAMPAIGN  
 Base Table:                    DEVEL\_CAMPAIGN  
 Query Results View:         V\_QRY\_RESULT\_AL\_CAMPAIGN  
 Join Columns:                 CAMPAIGN\_NO

### *Tracking*

Crystal Parameter Name:    \_SessionNo\_AL\_TRACK  
 Base Table:                    ALR\_CONS\_TRACK  
 Query Results View:         V\_QRY\_RESULT\_AL\_TRACK  
 Join Columns:                 RECORD\_INDEX

### *Tracking*

Crystal Parameter Name:    \_SessionNo\_EV\_TRACK  
 Base Table:                    ALR\_CONS\_TRACK  
 Query Results View:         V\_QRY\_RESULT\_EV\_TRACK  
 Join Columns:                 RECORD\_INDEX

### *Solicitors*

Crystal Parameter Name:    \_SessionNo\_AL\_SOLICITOR  
 Base Table:                    ALR\_CONS\_SOLICITOR  
 Query Results View:         V\_QRY\_RESULT\_AL\_SOLICITOR  
 Join Columns:                 MGR\_RECORD\_INDEX

### *Solicitors*

Crystal Parameter Name:    \_SessionNo\_EV\_SOLICITOR  
 Base Table:                    ALR\_CONS\_SOLICITOR  
 Query Results View:         V\_QRY\_RESULT\_EV\_SOLICITOR  
 Join Columns:                 MGR\_RECORD\_INDEX

### *Relationships*

Crystal Parameter Name:    \_SessionNo\_AL\_RELATION  
 Base Table:                    ALR\_CONS\_RELATION

	Query Results View:	V_QRY_RESULT_AL_RELATION
	Join Columns:	RELATION_RECORD_NO
<b>Relationships</b>		
	Crystal Parameter Name:	_SessionNo_EV_RELATION
	Base Table:	ALR_CONS_RELATION
	Query Results View:	V_QRY_RESULT_EV_RELATION
	Join Columns:	RELATION_RECORD_NO
<b>Moves</b>		
	Crystal Parameter Name:	_SessionNo_AL_MOVES
	Base Table:	ALR_CONS_MOVES
	Query Results View:	V_QRY_RESULT_AL_MOVES
	Join Columns:	RECORD_NO
<b>Moves</b>		
	Crystal Parameter Name:	_SessionNo_EV_MOVES
	Base Table:	ALR_CONS_MOVES
	Query Results View:	V_QRY_RESULT_EV_MOVES
	Join Columns:	RECORD_NO
<b>Constituents</b>		
	Crystal Parameter Name:	_SessionNo_AL_CONSTITUENT
	Base Table:	V_CONSTITUENT
	Query Results View:	V_QRY_RESULT_AL_CONSTITUENT
	Join Columns:	RECORD_NO
<b>Constituents</b>		
	Crystal Parameter Name:	_SessionNo_EV_CONSTITUENT
	Base Table:	V_CONSTITUENT
	Query Results View:	V_QRY_RESULT_EV_CONSTITUENT
	Join Columns:	RECORD_NO
<b>Constituents</b>		
	Crystal Parameter Name:	_SessionNo_SU_CONSTITUENT
	Base Table:	V_CONSTITUENT
	Query Results View:	V_QRY_RESULT_SU_CONSTITUENT
	Join Columns:	RECORD_NO
<b>Addresses</b>		
	Crystal Parameter Name:	_SessionNo_AL_ADDRESSALL
	Base Table:	V_CONS_ADDR_ALL
	Query Results View:	V_QRY_RESULT_AL_ADDRESSALL
	Join Columns:	ADDRESS_NO
<b>Pledges</b>		
	Crystal Parameter Name:	_SessionNo_AL_PLEDGE
	Base Table:	V_AL_PLEDGE
	Query Results View:	V_QRY_RESULT_AL_PLEDGE
	Join Columns:	RECORD_INDEX
<b>Gifts</b>		
	Crystal Parameter Name:	_SessionNo_AL_GIFT
	Base Table:	V_AL_GIFT
	Query Results View:	V_QRY_RESULT_AL_GIFT

	Join Columns:	RECORD_INDEX
<b><i>Gifts</i></b>	Crystal Parameter Name:	_SessionNo_EV_GIFT
	Base Table:	V_AL_GIFT
	Query Results View:	V_QRY_RESULT_EV_GIFT
	Join Columns:	RECORD_INDEX
<b><i>Students</i></b>	Crystal Parameter Name:	_SessionNo_SU_ALL_STUDENTS
	Base Table:	STUDENTS
	Query Results View:	V_QRY_RESULT_SU_ALL_STUDENTS
	Join Columns:	ID
<b><i>Parents</i></b>	Crystal Parameter Name:	_SessionNo_SU_ALL_PARENTS
	Base Table:	V_ALL_PARENTS
	Query Results View:	V_QRY_RESULT_SU_ALL_PARENTS
	Join Columns:	ENTITY_NO
<b><i>Attributes</i></b>	Crystal Parameter Name:	_SessionNo_AL_ATTRIBUTE
	Base Table:	ALR_CONS_ATTRIBUTE
	Query Results View:	V_QRY_RESULT_AL_ATTRIBUTE
	Join Columns:	RECORD_INDEX
<b><i>Attributes</i></b>	Crystal Parameter Name:	_SessionNo_EV_ATTRIBUTE
	Base Table:	ALR_CONS_ATTRIBUTE
	Query Results View:	V_QRY_RESULT_EV_ATTRIBUTE
	Join Columns:	RECORD_INDEX
<b><i>Programs</i></b>	Crystal Parameter Name:	_SessionNo_RG_PROGRAMS
	Base Table:	RG_SCHOOLSPROG
	Query Results View:	V_QRY_RESULT_RG_PROGRAMS
	Join Columns:	STUPROG_ROWID
<b><i>Schools</i></b>	Crystal Parameter Name:	_SessionNo_AL_SCHOOLMASTER
	Base Table:	EDUC_SCHOOL
	Query Results View:	V_QRY_RESULT_AL_SCHOOLMASTER
	Join Columns:	RECORD_NO
<b><i>Giving Levels</i></b>	Crystal Parameter Name:	_SessionNo_AL_GIVINGLEVELS
	Base Table:	AL_GIVING_LEVEL
	Query Results View:	V_QRY_RESULT_AL_GIVINGLEVELS
	Join Columns:	RECORD_NO